

KARRATHA**ELEV 33****AVFAX CODE 6802**

WA

UTC +8

YPKA

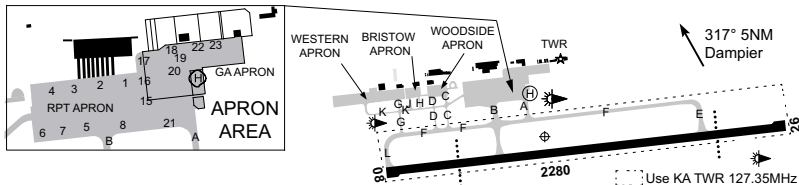
204244S

1164624E

VAR 1 DEG E

CERT

AD OPR City of Karratha, Karratha Office, PO Box 219, Karratha, WA, 6714. Email: airport.operations@karratha.wa.gov.au. PH Duty ARO H24 0418 799 460. PH Airport Management Office 08 9186 8507. Website: airport.karratha.wa.gov.au.

**REMARKS**

- AD Charges: All ACFT.
- At least 72 HRS PN RQ, in writing, to the Council, by MIL ACFT and non-RPT ACFT for parking on main RPT apron positions or for pavement concessions.
- This AD is a Security Controlled Airport.
- For airside security gate code CTC Airport Management Office 08 9186 8507 or AD Duty ARO 0418 799 460.
- All persons (excluding PAX operating or accessing airside) must wear high-visibility attire at all times.

HANDLING SERVICES AND FACILITIES

AIR BP: 2300-1000 UTC JO, 2300-0430 UTC SAT and SUN. AH and PH call-out fee applies. 1HR PN required AH. Mobile 0499 747 727, Fax 08 9185 6170. JET A1, AVGAS. VIVA Energy: 2200-1000 UTC, mobile 0417 831 341, AH 30HR PN mobile 0439 655 002, JET A1. VIVA Energy Fuel and Fly, VIVA Energy carnet and credit cards (V and MC).

RESCUE AND FIREFIGHTING SERVICES

- CAT 6 OPR HR:
 - MON and TUE - 2300-1145 UTC.
 - WED - 2300-1215 UTC.
 - THU - 2300-1235 UTC.
 - FRI - 2300-1125 UTC.
 - SAT - 0030-0915 UTC.
 - SUN - 0700-1125 UTC.
- 131.0 MHz AVBL HO.

APRONS AND TAXIWAYS

- TWY A not AVBL to ACFT ABV 80,000KG MTOW.
- ACFT ABV 12,100KG RQ pavement concession to use TWY C, D, G, H and K.
- TWY C, D, H, J north of TWY K to Bristow and Woodside APN AVBL to HEL ACFT only.
- TWY F 23M wide with lighting set at 30M.
- GA APN tie-downs rated to MAX 5,700KG.
- GA APN active tie-downs designated by white markings with a red stripe.
- GA APN DCMSD tie-downs designated by a solid red marking.

AERODROME OBSTACLES

- Unlit power pole 159FT BRG 252M/3,274M FM SOT RWY 26. Infringes TNS.
- Tower lit 639FT AMSL (427FT AGL) 356DEG M/5.8 NM (10.7KM) FM ARP.
- RWY 08/26 transitional SFC south side infringed by secondary illuminated WDI 100M FM RWY 26 THR, 160M FM CL. Infringed by 20FT marked by red OBST LGT.
- Weather radar "East Intercourse Island", lit with red LGT 207FT AMSL BRG 305 MAG 6NM FM ARP.

METEOROLOGICAL INFORMATION PROVIDED

1. TAF CAT B, METAR/SPECI.
2. WATIR Phone 08 6216 2620 - Report faults to BoM.
3. WATIR 135.85 - Report faults to AD OPR.

PHYSICAL CHARACTERISTICS

08/26 083 75a PCN 53 /F /B /1500 (218PSI) /T Grooved WID 45 RWS 300

AERODROME AND APPROACH LIGHTING

RWY 08/26	MIRL(2)	AFRU+PAL 127.35		SDBY PWR AVBL
RWY 08/26	PAPI(1)	AFRU+PAL 127.35	3.0 DEG62FT	SDBY PWR AVBL
RWY 08/26	PTBL(3)			BY PRIOR
				ARRANGEMENT

- (1) Both sides. Activated by AFRU+PAL outside TWR HR.
 - (2) Activated by AFRU+PAL outside TWR HR. During TWR HR, TWR has intensity control over PAPI, RWY and TWY lighting.
 - (3) EMERG only. 60MIN PN for rotary wing. 120MIN PN for fixed wing.
- Outside TWR HR PAPI, RWY and TWY lighting may switch intensity automatically subject to prevailing conditions. Outside TWR HR normal AFRU+PAL is AVBL. PAL is activated for one hour.

OTHER LIGHTING

1. SDBY PWR switchover time: 3 MIN.
2. TWY LGT: Blue edge.

ATS AND AERODROME COMMUNICATION FACILITIES

FIA	MELBOURNE CENTRE		122.4 On Ground
ATIS	KARRATHA ATIS	(2)	134.55
SMC	KARRATHA GROUND		123.55
TWR	KARRATHA TOWER		127.35 (1)

- (1) Landing ACFT to remain on TWR FREQ until vacated TWY FOXTROT and then MONITOR GND unless instructed otherwise.
 - (2) Also AVBL 08 9186 8923
1. TWR HR:
 - a. MON-FRI: 2245-1130 UTC
 - b. SAT: 2245-0645 UTC
 - c. SUN: 0000-1130 UTC

Phone 08 9186 8921^ or email: karratha.tower@airservicesaustralia.com
Note: TWR HR may change at short notice. Check status of airspace with ATS or Karratha ATIS.
 2. Karratha TWR provides combined TWR and APP CTL services within Class D airspace BLW 5,500FT AMSL during TWR HR. CTC TWR for clearance.
 3. Outside TWR HR, Karratha Class D airspace becomes Class G.
 4. Melbourne Centre 122.4 operates Karratha Class E airspace 5,500FT AMSL and ABV H24.

RADIO NAVIGATION AND LANDING AIDS

DME	KA	117.3/120X	204254.4S	1164626.0E		(1)
NDB	KA	404	204221.9S	1164702.3E	Range 70 (HN 70)	
VOR	KA	117.3	204254.3S	1164626.2E		(2)

- (1) Antenna ELEV 41FT.
- (2) Possible excessive fluctuations BTN radials 270 and 350 due terrain.

LOCAL TRAFFIC REGULATIONS

1. Non RPT ACFT with wing span greater than 20M, at least H24 PN required for parking on GA apron.
2. 48HR PN for all ACFT ABV 5,700KG and for all pavement concessions.
3. ACFT ABV 7,000KG RQ to taxi on RCL and turn at turning nodes.
4. All turns at RWY turning nodes to be at MNM speed and MAX RAD to avoid pavement damage.
5. All SVY, practice IAL and NAVAID training within KA Class D and E airspace requires prior notice to TWR 08 9186 8921^.
6. RPT Apron Bay 1 not AVBL HN.

FLIGHT PROCEDURES

1. Outside TWR HR, fixed wing ACFT should remain S of RWY 08/26 on base circuit.
2. Circuit Direction:
Outside TWR HR, RWY 08 Right Hand circuits; RWY 26 Left Hand Circuits.
3. Extensive Helicopter OPS conducted to N of AD.
4. ACFT BAE-146 and above, when joining downwind for RWY 26 are REQ to join the circuit South of the town site to avoid overflying residential areas.
5. Low visibility operations not AVBL.
6. ATC may process SIMUL same direction independent OPS on RWY 08/26 and TWY F as a HLS, with the following conditions:
 - a. In VMC, by day.
 - b. Between HEL and single/twin engined propeller ACFT.
 - c. RWY centre line and TWY centre are spaced at 200M.
 - d. Pertinent traffic will be issued.
 - e. Both ACFT will be on the same FREQ.

CTAF - AFRU 127.35**ADDITIONAL INFORMATION**

1. Bird and animal hazard exists.
2. Unannounced high velocity gas discharge may occur within D150 (APRX 002DEG MAG/7.5NM ARP).
3. D154 Karratha Dampier Firing Range may be in use without promulgation of NOTAM as indicated by flags lining the range.

CHARTS RELATED TO THE AERODROME

1. WAC 3229.
2. Refer to AIP Departure and Approach Procedures.
3. Aerodrome Obstacle Chart Type A: May 2022 AVBL from AD OPR.