

NARROMINE**ELEV 782****AVFAX CODE 2221**

NSW

UTC +10

YNRM

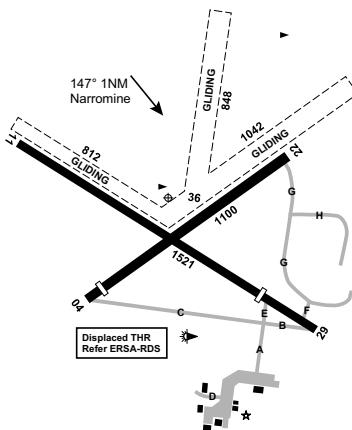
321252S

1481329E

VAR 11 DEG E

CERT

AD OPR Narromine Shire Council, PO Box 115, Narromine, NSW, 2821. PH 02 6889 9999: AH 0458 888 674. ARO 0408 852 931 (H24). Fax 6889 9998.

**HANDLING SERVICES AND FACILITIES**

Inland Petroleum: AVGAS H24 self-service. Inland Petroleum account cards, V and MC accepted. Phone 0428 607 372, 0417 260 031.

PASSENGER FACILITIES

PT/TX (131 008)/AC (02 6889 2129)/RF/WC/ME (02 6889 2366) ME Avionics (02 6889 2733)

APRONS AND TAXIWAYS

1. TWY C 5,700KG MAUW.
2. TWY E 2,000KG MAUW.
3. TWY F, G, H and K gravel.
4. TWY L bitumen.

AERODROME OBSTACLES

LIOL - 945FT AMSL, 1,900M, 154 M FM RWY intersection.

PHYSICAL CHARACTERISTICS

04/22	043	36a	PCN 10 /F /B /580 (84PSI) /T	WID 30	RWS 90
11/29	110	50a	PCN 10 /F /B /580 (84PSI) /T	WID 30	RWS 150

AERODROME AND APPROACH LIGHTING

RWY 11/29 LIRL PAL 122.4

RWY 11/29 edge light spacing: 60M.

OTHER LIGHTING

ABN FLG 10 W

TWY LGT: Blue edge on TWY A and B from APN to end RWY 11.

ATS AND AERODROME COMMUNICATION FACILITIES

FIA MELBOURNE CENTRE 123.9 Circuit Area

LOCAL TRAFFIC REGULATIONS

Access to TWY D FM APN not AVBL.

FLIGHT PROCEDURES

Gliding OPS HJ. Gliders operate common circuit direction from separate strips alongside RWS. Glider strips marked by orange gable markers. Also AVBL for tail-skid-equipped ACFT. Simultaneous OPS NOT permitted.

CTAF 126.7**ADDITIONAL INFORMATION**

Bird hazard (cockatoos, crows and hawks) exists in VCY of AD. Increased numbers expected between SEP and MAR.

CHARTS RELATED TO THE AERODROME

1. WAC 3456, 3457.
 2. Also refer to AIP Departure and Approach Procedures.
-