

**HERVEY BAY****ELEV 60****AVFAX CODE 4026**

QLD

UTC +10

YHBA

251908S

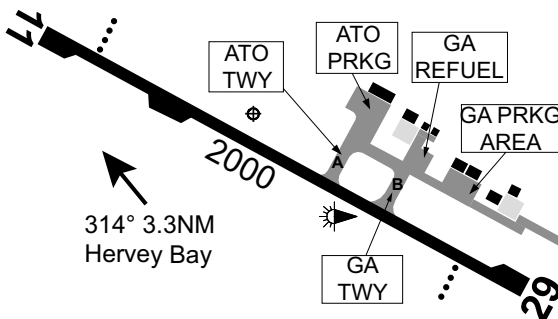
1525249E

VAR 10 DEG E

CERT

AD OPR Fraser Coast Regional Council, PO Box 1943, Hervey Bay, QLD, 4655. PH 1300 794 929.

ARO 0419 671 405. Website: www.frasercoastairport.com.au.

**REMARKS**

- AD Charges: Fees apply - see website or CTC AD OPR.
- This AD is a Security Controlled Airport. All persons (excluding PAX), operating or accessing airside must wear high VIS attire at all times.
- GA pedestrian access via GA APN only.

**HANDLING SERVICES AND FACILITIES**

World Fuel Services - Fraser Coast Aviation: 2100-0630 UTC DLY. Phone 0412 253 267, AH 2HR PN, call out fee may apply. AVGAS H24 WFS carnet card and credit card (via smartphone app) activated bowser or cash. AVGAS, JET A1, O125, O156.

**PASSENGER FACILITIES**

RF/PT/LG/WC/ME

**SURFACE MOVEMENT GUIDANCE**

RWY 29 DIST to run markers 600/400/200M.

**AERODROME OBSTACLES**

- Unlit GA APN LGT, 84FT AMSL, 129M NE of RWY CL, infringes TNS BY 7FT.
- Mobile TWR LIT, 345FT AMSL, BRG 159 MAG, 2.47NM FM ARP, infringes inner HZS.
- Masts:
  - Lit, 400FT AMSL, BRG 270 MAG 2.67NM FM ARP, infringes inner HZS.
  - Lit, 250FT AMSL, BRG 142 MAG, 1.9NM FM ARP, infringes inner HZS (NBN mast).
  - Unlit, 349FT AMSL, BRG 158 MAG 2.48NM FM ARP, infringes inner HZS.
  - Unlit, 370FT AMSL, BRG 270 MAG 2.67NM FM ARP, infringes inner HZS.

**METEOROLOGICAL INFORMATION PROVIDED**

- TAF CAT B, METAR/SPECI.
- AWIS Phone 07 3564 3717 - Report faults to BoM.
- AWIS FREQ 134.9 - Report faults to AD OPR.

**PHYSICAL CHARACTERISTICS**

11/29 108 66a PCN 42 / F / B / 1503 (218PSI) / T Grooved WID 30 RWS 150

**AERODROME AND APPROACH LIGHTING**

RWY 11/29 LIRL(1) PAL 122.8

SDBY PWR AVBL

RWY 11/29 PAPI(2) PAL 122.8 3.0 DEG53FT

SDBY PWR AVBL

(1) PAL requires three one-second pulses to activate.

(2) Left side. PAL requires three one-second pulses to activate.

RWY edge light spacing: 11/29: 60M.

**OTHER LIGHTING**

1. Secondary PWR switchover time: 15 SEC.
2. TWY LGT: Blue edge.

**ATS AND AERODROME COMMUNICATION FACILITIES**

FIA BRISBANE CENTRE 124.6 500FT

On ground COMS may be available with ATS dependent on ACFT location and building shielding.

**LOCAL TRAFFIC REGULATIONS**

1. All GA ACFT must park in the designated parking areas or at the discretion of the duty ARO.
2. Parking on the Air Traffic Operation (ATO) apron is restricted to ATO ACFT or ACFT approved by the AD Manager or delegate. No other ACFT may park on the ATO apron other than for picking up or setting down passengers.
3. GA PRKG APN not AVBL to ACFT ABV 5,700KG MTOW.
4. Bay 1 of ATO APN AVBL for GEN HEL use. HEL to park on western edge. PN if in group.
5. GA TWY not AVBL to ACFT ABV 15,000KG MTOW.
6. The operation of ACFT is restricted to sealed RWY, TWY and APN.
7. ACFT at W end of RWY may not be sighted by ACFT at TWY intersection due RWY levels.
8. All ACFT ABV 20,000KG must use THR turning nodes to turn around on RWY 11/29.
9. ACFT must use MAX radius turns on RWY 11/29 turning nodes.

**FLIGHT PROCEDURES**

1. Due to RWY longitudinal slope ACFT must broadcast intentions on CTAF before operating on RWY.
2. For special procedures which apply to the Great Sandy Bay Marine Park and Fraser Island, see entry under ERS A GEN - SPECIAL PROCEDURES.

**CTAF - AFRU** 126.55

**ADDITIONAL INFORMATION**

Flying foxes in the vicinity of the AD particularly at dusk.

**CHARTS RELATED TO THE AERODROME**

1. WAC 3340.
  2. Also refer to AIP Departure and Approach Procedures.
-