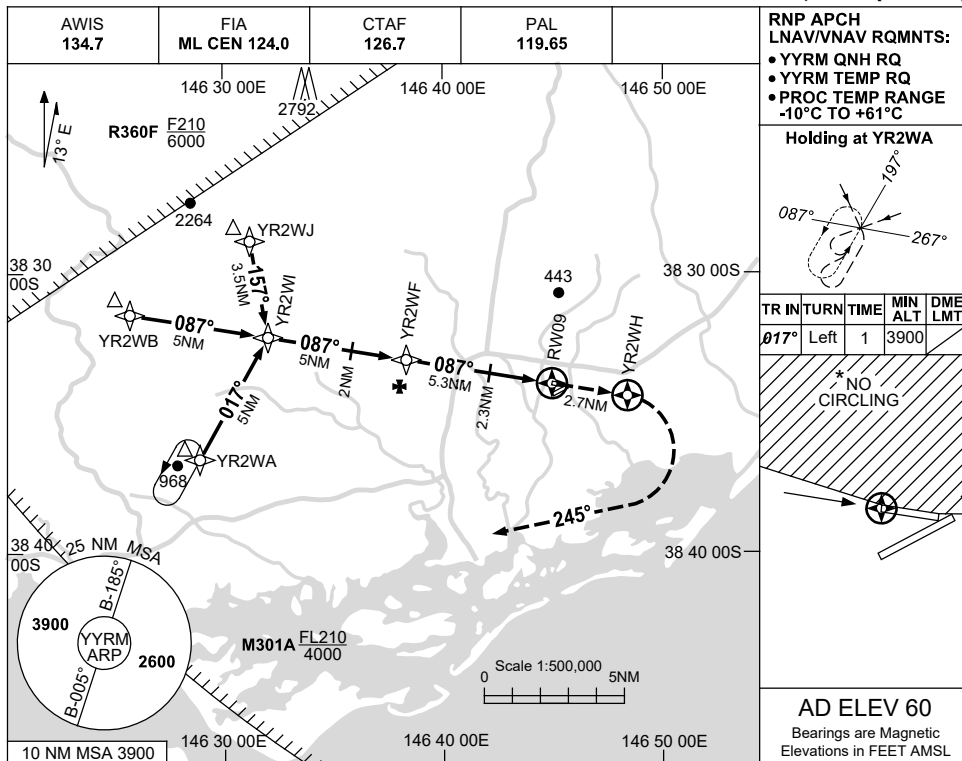


USE QNH

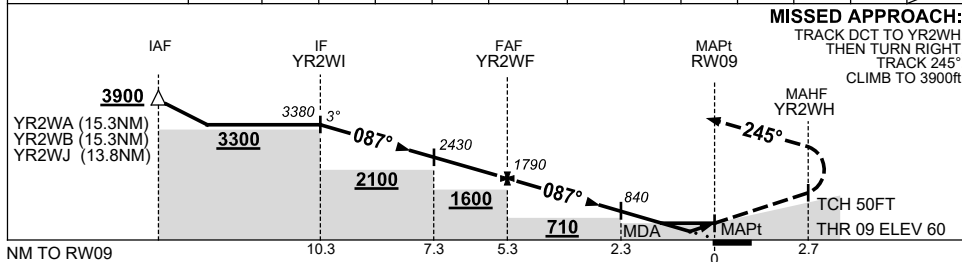
RNP RWY 09

YARRAM, VIC (YYRM)

30 NOV 2023



NM TO NEXT WPT	YR2WI	4	3	2	1	YR2WF	4	3	2.3	2	1.6	1	RW09
ALT (3° APCH PATH)	3380	3060	2750	2430	2110	1790	1380	1070	840	750	620	420	



**NOTES**

CATEGORY	A	B	C	D
LNAV/VNAV	420 (360-2.0)			NOT APPLICABLE
LNAV	620 (560-3.2)			
CIRCLING *	660 (600-2.4)		760 (700-4.0)	
ALTERNATE	(1100-4.4)		(1200-6.0)	

- MAX IAS :  
 YR2WA : 210KT.  
 YR2WB : 210KT.  
 YR2WJ : 190KT.
- \* 2. NO CIRCLING N OF RWY 09/27.

Changes: R360F REPLACES R359G, M301A REPLACES R359F, Editorial.

YRMGN01-177