

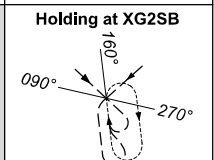
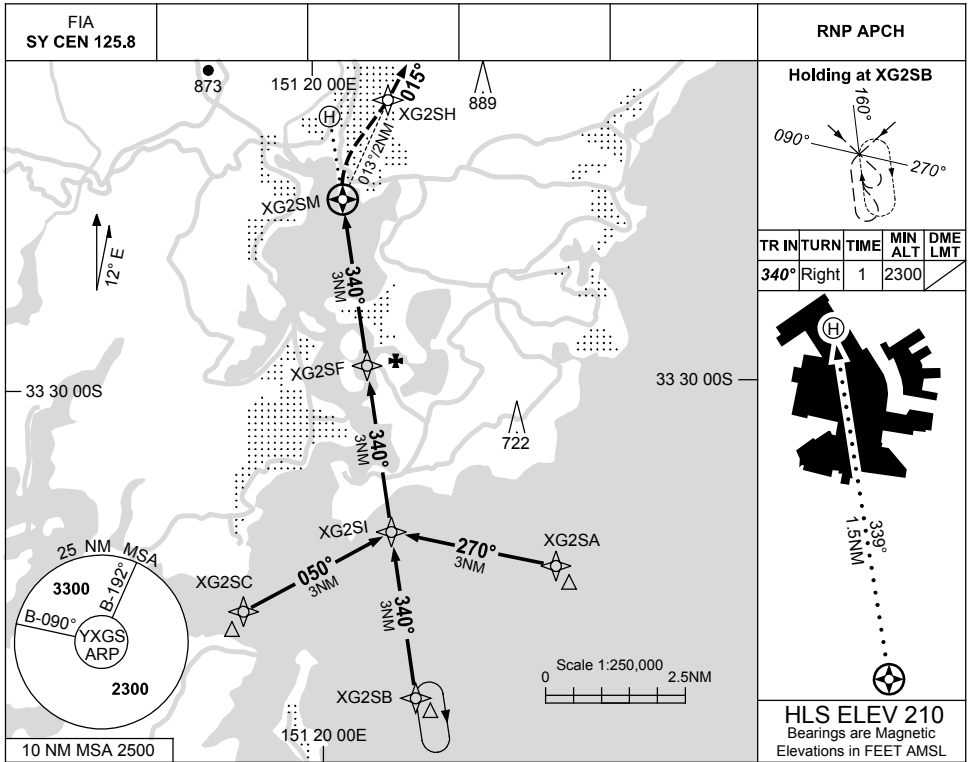
FOR CASA APPROVED OPERATORS ONLY

USE QNH

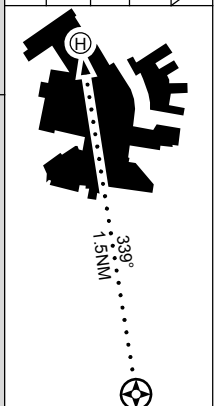
RNP 340

23 MAR 2023

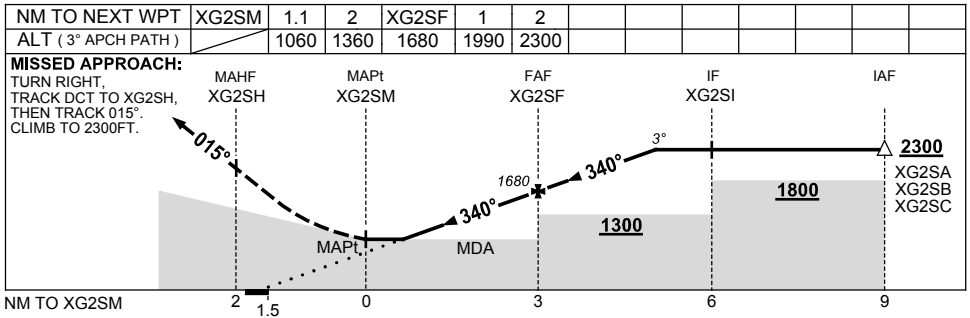
GOSFORD HOSPITAL, NSW (YXGS)



TR	TURN	TIME	MIN ALT	DME LMT
340°	Right	1	2300	



HLS ELEV 210
Bearings are Magnetic
Elevations in FEET AMSL



NOTES

CATEGORY	H
GNSS (VAA)	1060 (850-4.9)
ALTERNATE	NOT APPLICABLE

Changes: MINIMA, DIST/ALT TABLE, WPT NAMING CONVENTION.

YXGSN01-174

FOR CASA APPROVED OPERATORS ONLY