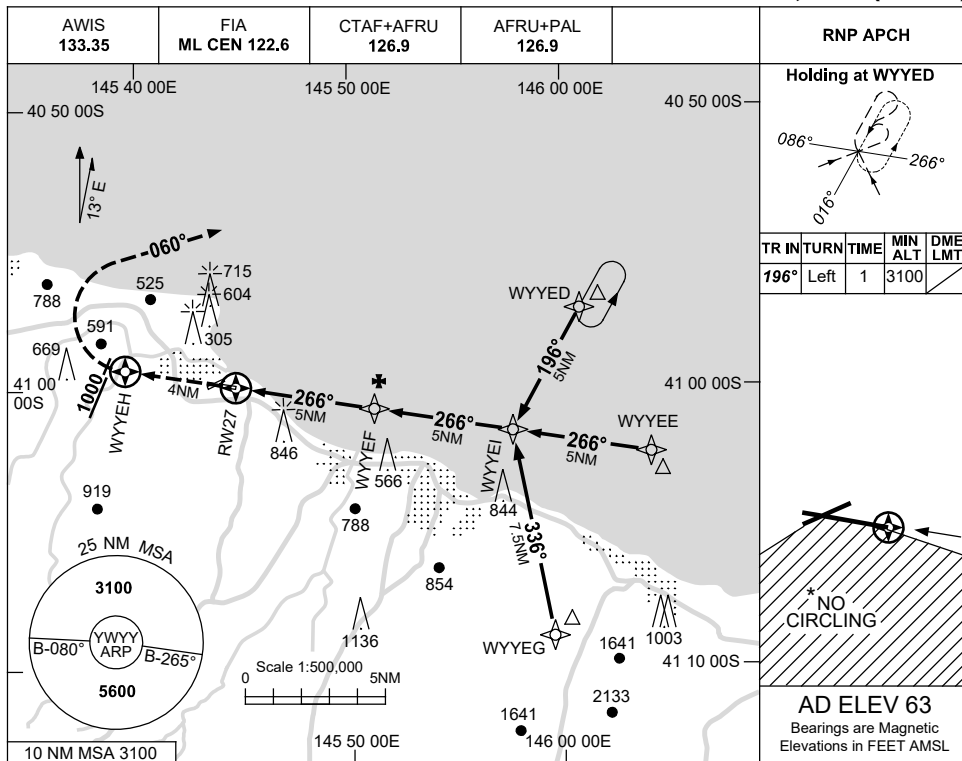


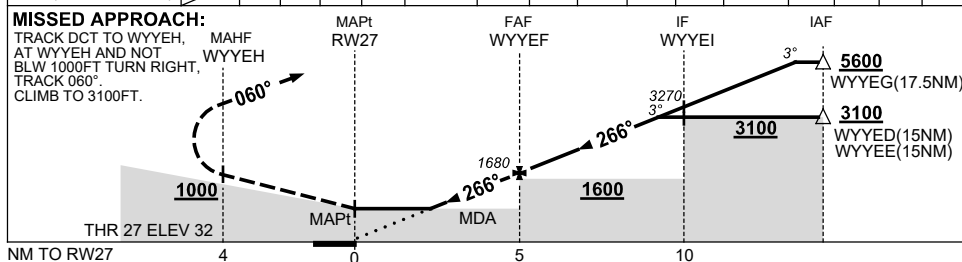
USE QNH

RNP RWY 27
WYNYARD, TAS (YWYY)

15 JUN 2023



NM TO NEXT WPT	RW27	1.7	2	3	4	WYVEF	1	2	3	4	4.5	WYVEI	1	3	5	7.3
ALT (3° APCH PATH)		630	720	1040	1360	1680	1990	2310	2630	2950	3100	3270	3590	4220	4860	5600



NOTES

CATEGORY	A	B	C	D
LNAV	630 (598-3.4)			NOT APPLICABLE
CIRCLING *	1170 (1107-2.4)		1270 (1207-4.0)	
ALTERNATE	(1607-4.4)		(1707-6.0)	

- MAX IAS:
INITIAL : 210KT.
HOLD : 210KT.
- NO CIRCLING SOUTH OF RWY 09/27 & RWY 05/23.

Changes: CHART TITLE, PBN SPECIFICATION BOX, Editorial.

WYVGN02-175