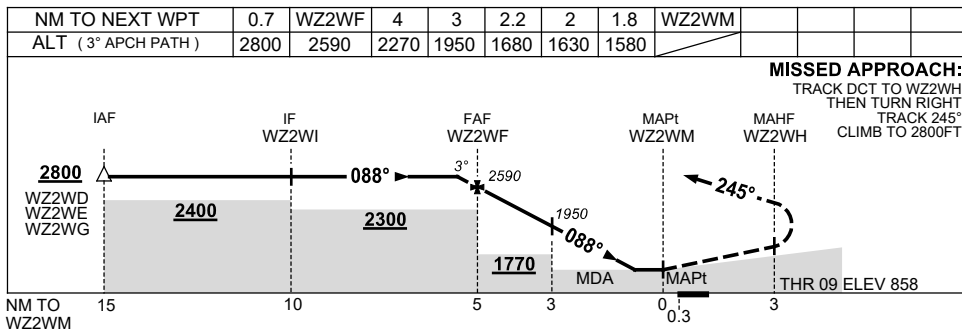
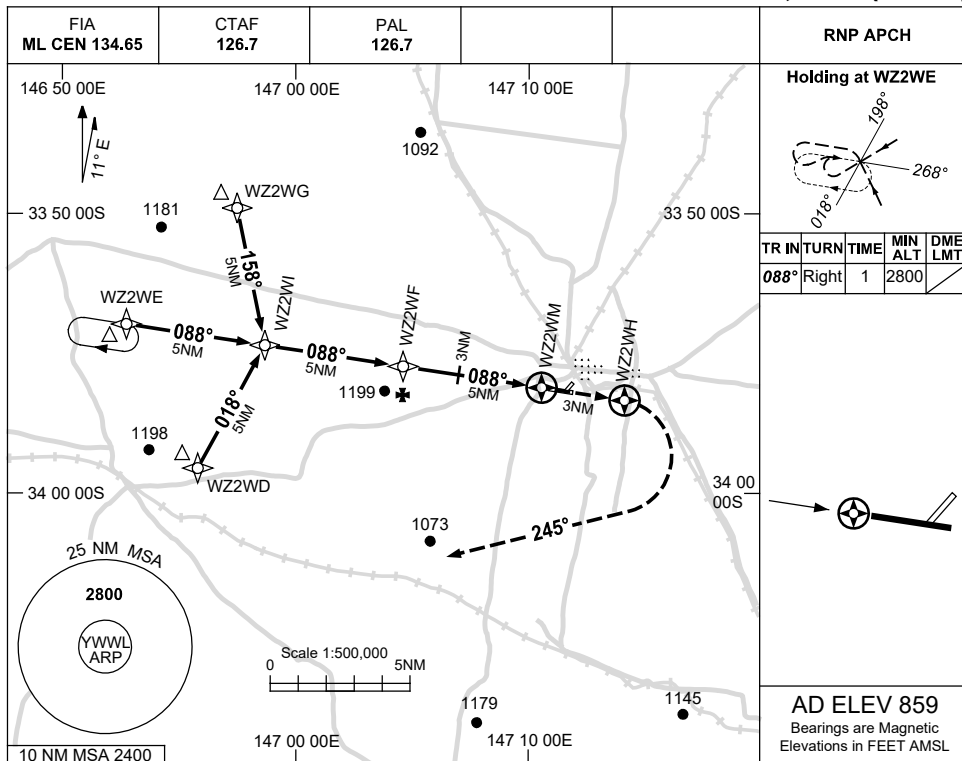


USE QNH

RNP W

15 JUN 2023

WEST WYALONG, NSW (YWWL)



NOTES

CATEGORY	A	B	C	D
CIRCLING	1580 (721-2.4)		1680 (821-4.0)	NOT APPLICABLE
ALTERNATE	(1221-4.4)		(1321-6.0)	

1. MAX IAS:
INITIAL : 210KT.
2. AWIS (PHONE)
02 9353 6457

Changes: CHART TITLE, PBN SPECIFICATION BOX, Editorial.

WWLGN01-175