

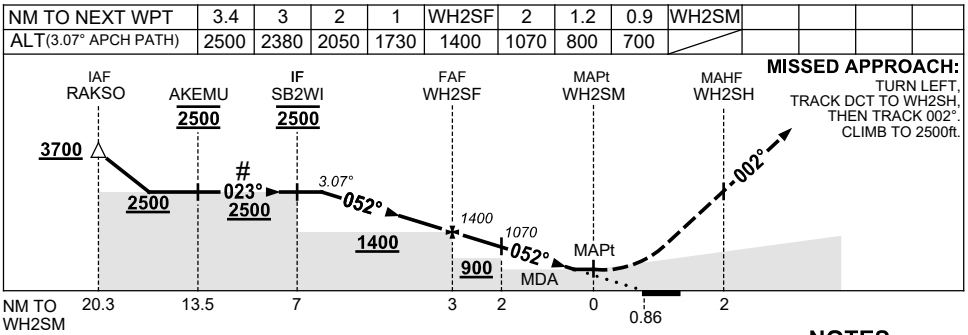
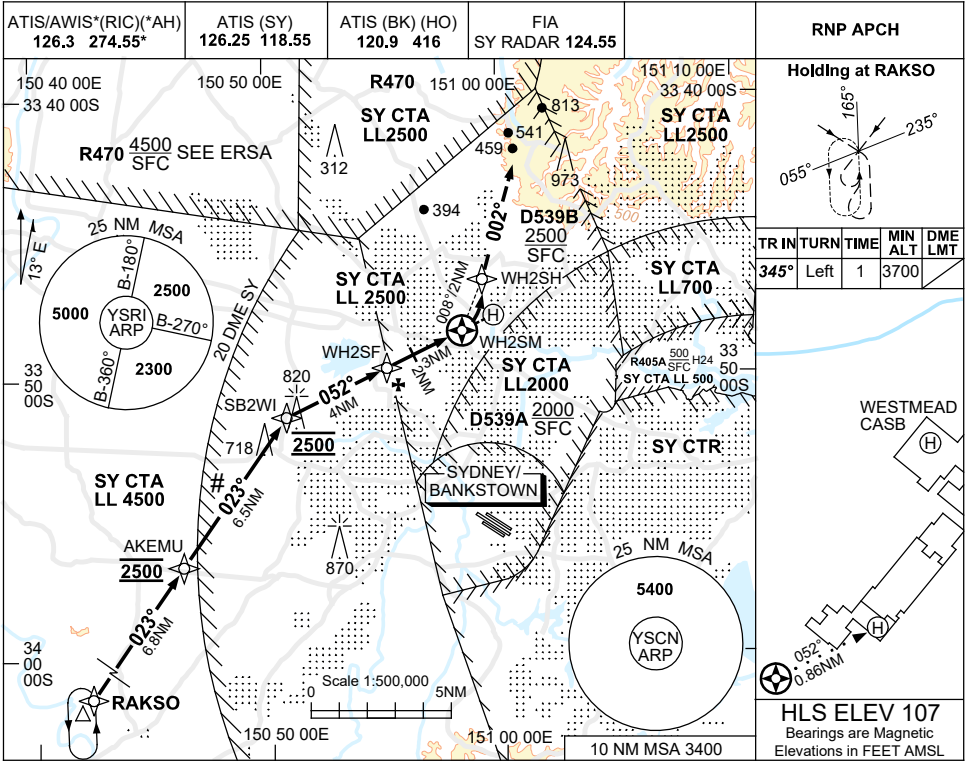
FOR CASA APPROVED OPERATORS ONLY

USE QNH

RNP 052

28 NOV 2024

WESTMEAD HOSPITAL, NSW (YWST)



NOTES

- #1. INITIAL SEGMENT CO-INCIDENT WITH INITIAL SEGMENT FOR YSBK RNP RWY 11C PROC.
2. **COLOUR:** SEE SPEC NOTICES.
3. APCH CLR RQ FM SY ATIS. ALL ACFT TRACK VIA RAKSO UNLESS ADVISED BY ATC.

Changes: WPT AKEMU ADDED, ALT RQMNTS.

WSTGN02-181

FOR CASA APPROVED OPERATORS ONLY