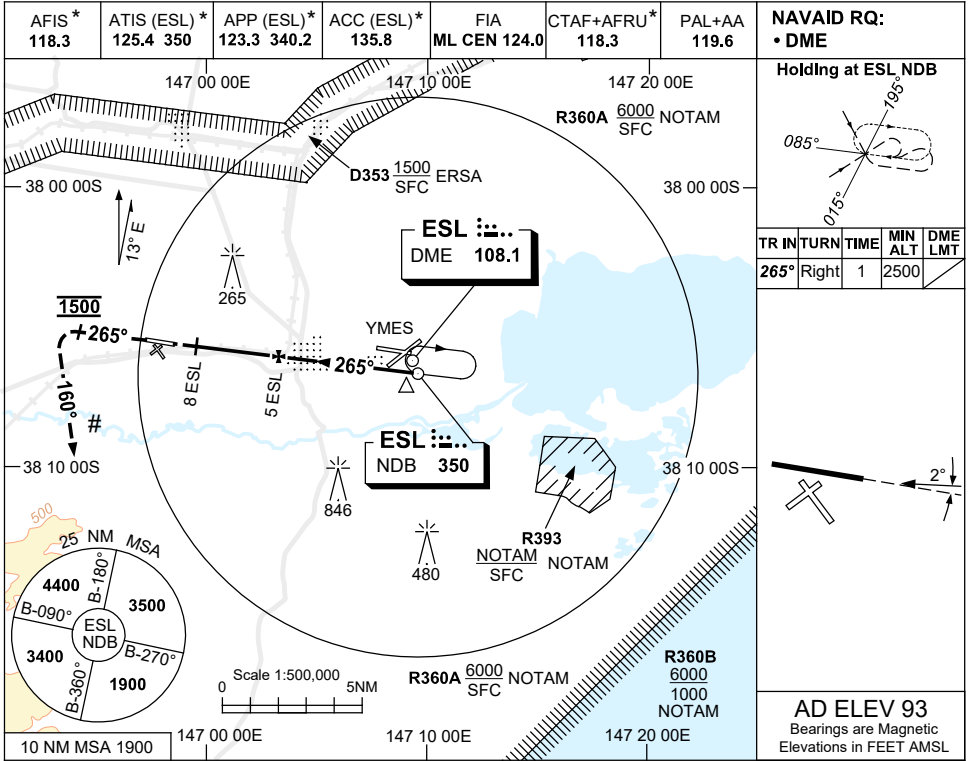


USE QNH

NDB-Y RWY 27  
**WEST SALE, VIC (YWSL)**

28 NOV 2024



**NAVAID RQ:**  
 • DME

**Holding at ESL NDB**

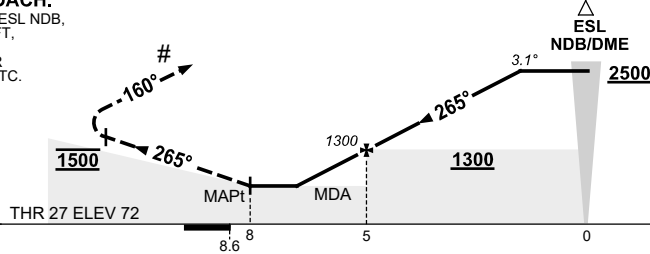
TR	IN	TURN	TIME	MIN	DME
				ALT	LMT
265°	Right		1	2500	

**AD ELEV 93**  
 Bearings are Magnetic  
 Elevations in FEET AMSL

NM FM ESL DME	MAPt	6.9	6	5	4	3	2	1.4				
ALT (3.1° APCH PATH)		690	970	1300	1630	1960	2290	2500				

**MISSED APPROACH:**

TRACK 265° FROM ESL NDB,  
 AT 1500ft TURN LEFT,  
 TRACK 160°.  
 CLIMB TO 3500ft OR  
 AS DIRECTED BY ATC.



**NOTES**

- MAX IAS :  
HOLDING : 210KT.
- REFER TO ERSA  
FOR AVAILABILITY.
- MDA MAY BE REDUCED  
BY 100ft USING YMES  
QNH.
- YYRM RNP RWY 27  
PROC IS 20NM TO  
THE SOUTH.
- COLOUR : SEE  
SPEC NOTICES.

CATEGORY	A	B	C	D
CIRCLING‡	870 (777-2.4)		870 (777-4.0)	
ALTERNATE	(1277-4.4)		(1277-6.0)	

NOT APPLICABLE

Changes: R391A-B DELETED, R393 ADDED, Editorial.

WSLNB01-181