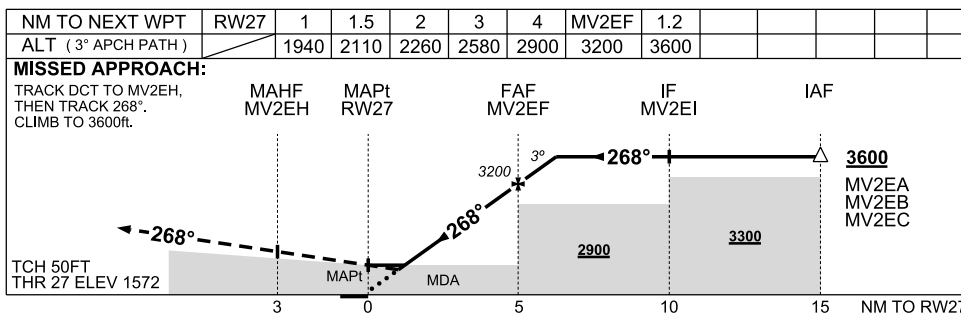
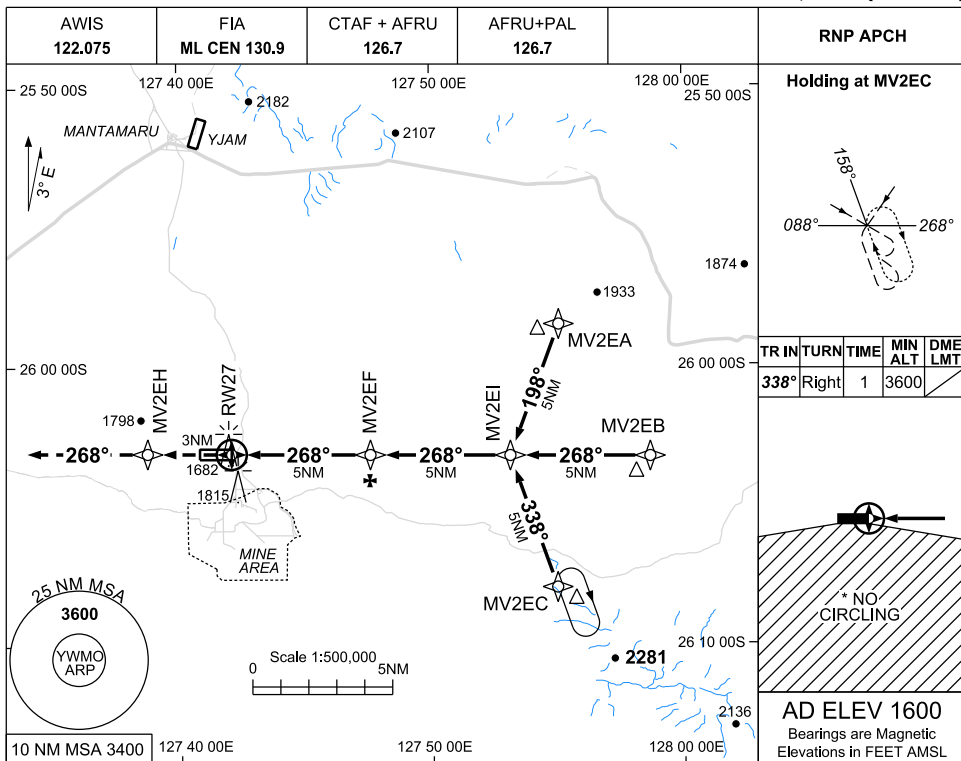


USE QNH

RNP RWY 27

28 NOV 2024

WEST MUSGRAVE, WA (YWMO)



**NOTES**

1. MAX IAS INITIAL: 210KT.
2. NO CIRCLING S OF RWY 09/27.

CATEGORY	A	B	C	D
LNAV	2110 (538 - 3.0)			<b>NOT APPLICABLE</b>
* CIRCLING	2320 (720 - 2.4)		2420 (820-4.0)	
ALTERNATE	(1220 - 4.4)		(1320 - 6.0)	

Changes: FROM SUP H74/24

WMOGN02-181