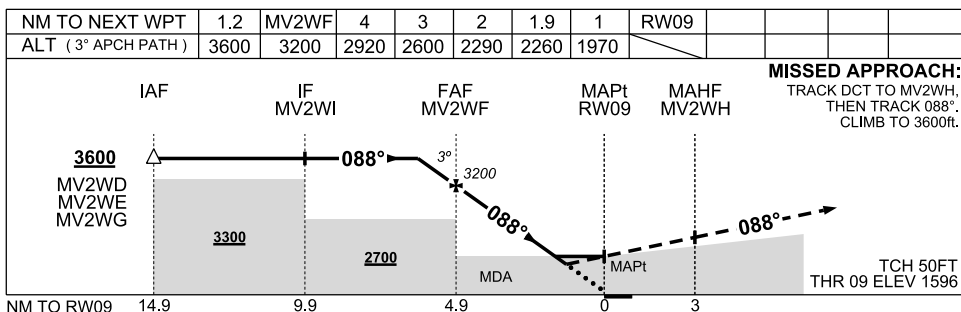
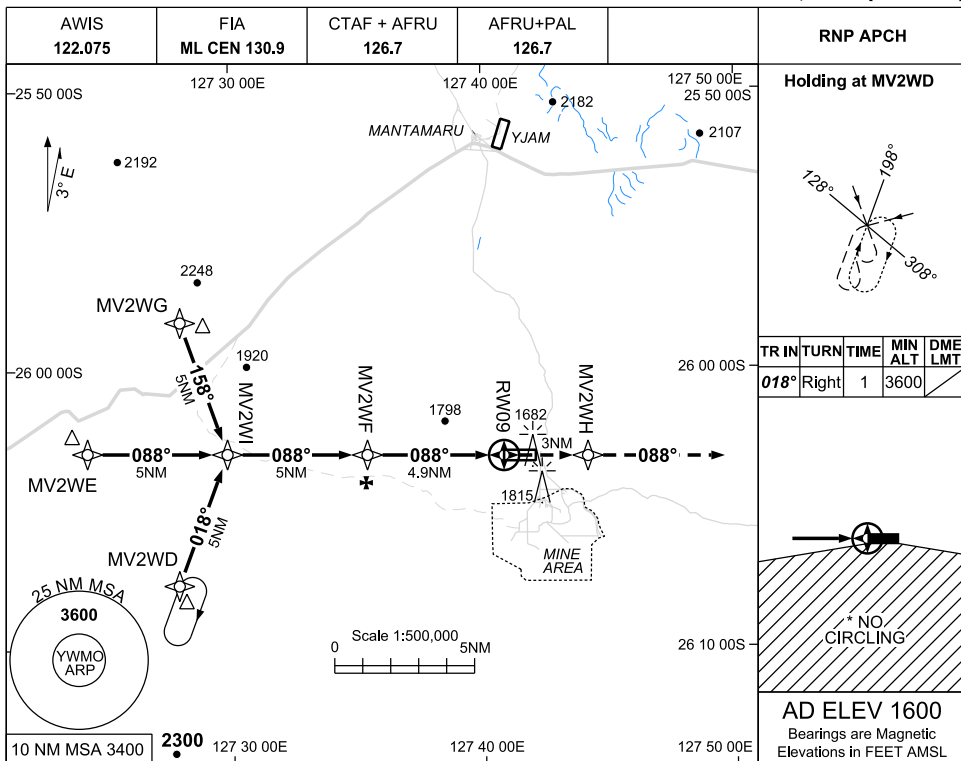


USE QNH

RNP RWY 09

28 NOV 2024

WEST MUSGRAVE, WA (YWMO)



NOTES

- 1. MAX IAS: INITIAL: 210KT.
- *2. NO CIRCLING S OF RWY 09/27.

CATEGORY	A	B	C	D
LNAV	2260 (664 - 3.8)			NOT APPLICABLE
* CIRCLING	2320 (720 - 2.4)	2420 (820-4.0)		
ALTERNATE	(1220 - 4.4)		(1320 - 6.0)	

Changes: FROM SUP H74/24

WMOGN01-181