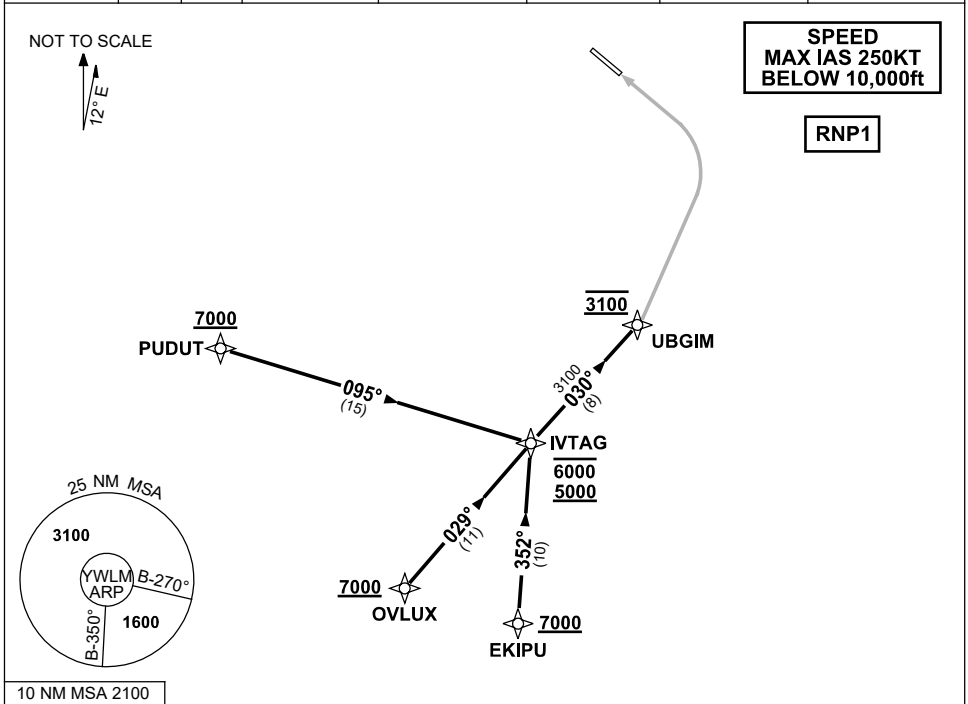


**STANDARD ARRIVAL ROUTE (STAR)  
 IVTAG ONE ROMEO (RNAV) RWY 30  
 WILLIAMTOWN, NSW (YWLM)**

13 JUN 2024

ATIS 134.45 316.1 365	ACD 130.35	SMC 121.8	TWR 118.3 280.9 243.0	APP H 133.3 261.4 L 135.7 293.4	FIA (AH) BN CEN 125.7	CTAF+AFRU (AH) AFRU+PAL (AH) 118.3	BRG are MAG ELEV in FEET AMSL
-----------------------------	---------------	--------------	-----------------------------	---------------------------------------	--------------------------	--	----------------------------------



10 NM MSA 2100

**TRANSITIONS:**

**PUDUT:**

- **Cross PUDUT AT or ABV 7000ft**
- From PUDUT track 095° to IVTAG

**OVLUX:**

- **Cross OVLUX AT or ABV 7000ft**
- From OVLUX track 029° to IVTAG

**EKIPU:**

- **Cross EKIPU AT or ABV 7000ft**
- From EKIPU track 352° to IVTAG

**ARRIVAL: IVTAG ONE ROMEO RWY 30**

- **Cross IVTAG BTN 5000ft and 6000ft**
- From IVTAG track 030° to UBGIM
- **Cross UBGIM AT 3100ft**
- Track via RNP W RWY 30 (AR)

**THEN FOLLOW ARRIVAL INSTRUCTION**

**COMMUNICATIONS FAILURE: PROCEDURE IN IMC**

- Squawk 7600, comply with vertical navigation requirements, but not below MSA.
- Track via the latest STAR clearance to the nominated runway, then fly the most suitable approach in accordance with ERSA EMERG Section 1.5.