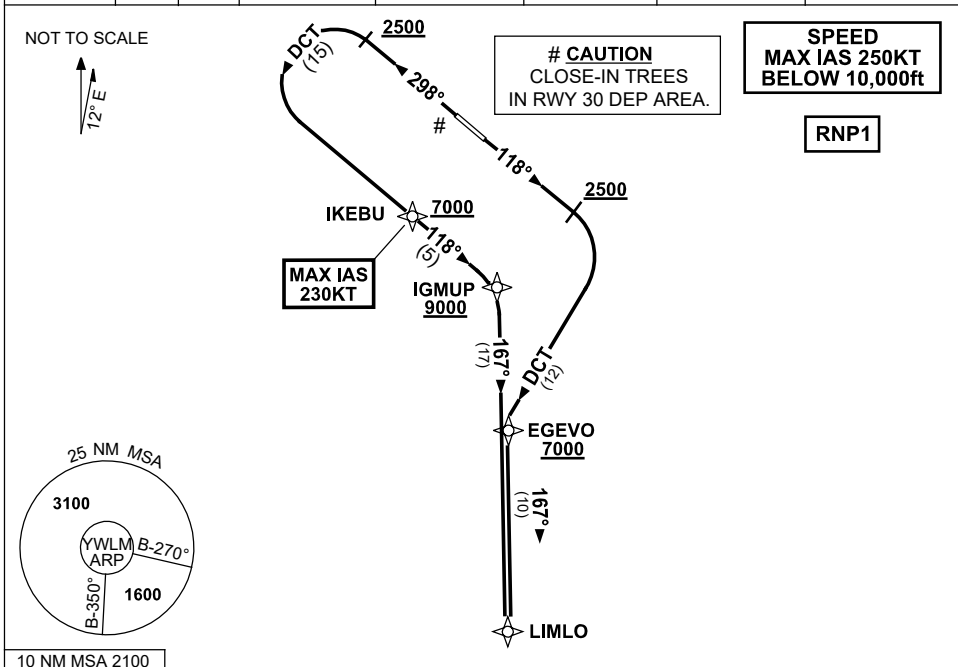


**STANDARD INSTRUMENT DEPARTURES (SID)
LIMLO ONE DEPARTURE (RNAV) RWY 12/30
WILLIAMTOWN, NSW (YWLM)**

30 NOV 2023

ATIS 134.45 316.1 365	ACD 130.35	SMC 121.8	TWR 118.3 280.9 243.0	APP H 133.3 261.4 L 135.7 293.4	FIA (AH) BN CEN 125.7	CTAF+AFRU (AH) AFRU+PAL (AH) 118.3	BRG are MAG ELEV in FEET AMSL
-----------------------------	---------------	--------------	-----------------------------	---------------------------------------	--------------------------	------------------------------------------	----------------------------------



LIMLO ONE DEPARTURE

RWY 12

- GRAD 3.3%
- Track 118°
- AT or ABV 2500ft turn RIGHT
- Track DCT to EGEVO
- Cross** EGEVO AT or ABV 7000
(RQ GRAD TO EGEVO: 6.2%)
- Turn LEFT, track 167° to LIMLO

RWY 30

- GRAD 3.3%
- MAX IAS 230KT until IKEBU
- Track 298°
- AT or ABV 2500ft
- Turn LEFT, track DCT to IKEBU
- Cross** IKEBU AT or ABV 7000ft
- Track 118° to IGMUP
- Cross** IGMUP AT or ABV 9000ft
(RQ GRAD TO IGMUP: 5.7%)
- Turn RIGHT, track 167° to LIMLO

COMMUNICATIONS FAILURE PROCEDURE

On recognition of communication failure:

- Squawk 7600
- Maintain last assigned vector for two minutes and, if necessary, climb to minimum safe altitude to maintain terrain clearance, then
- Proceed in accordance with the latest ATC route clearance acknowledged

Changes: NEW PROC.

WLM DP07-177