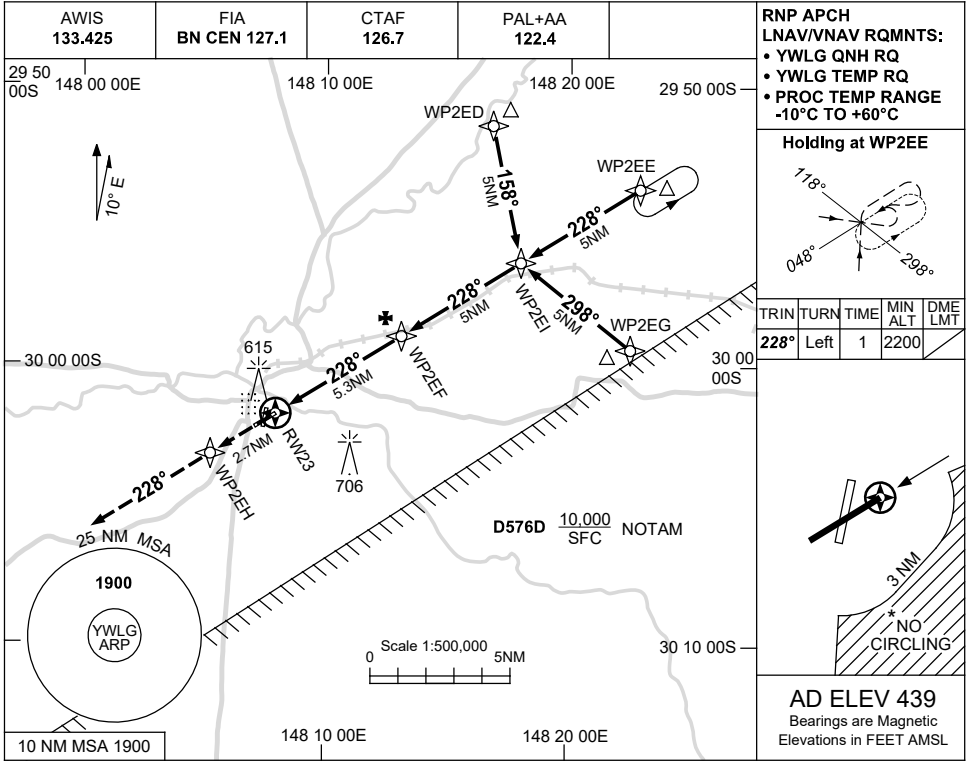


USE QNH

RNP RWY 23
WALGETT, NSW (YWLG)

5 SEP 2024



RNP APCH LNAV/VNAV RQMNTS:

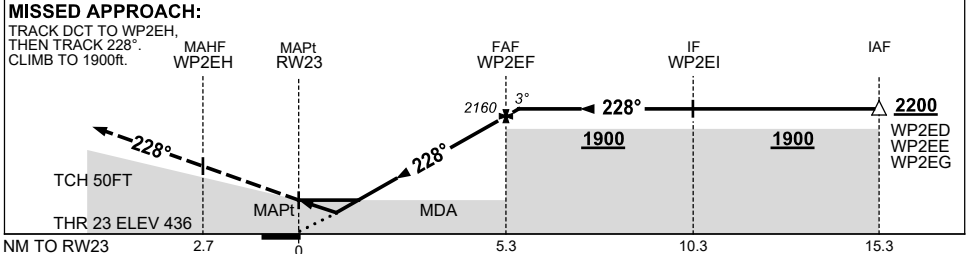
- YWLG QNH RQ
- YWLG TEMP RQ
- PROC TEMP RANGE -10°C TO +60°C

Holding at WP2EE

TRIN	TURN	TIME	MIN ALT	DME LMT
228°	Left	1	2200	

AD ELEV 439
 Bearings are Magnetic
 Elevations in FEET AMSL

NM TO NEXT WPT	RW23	0.8	1	1.4	2	3	4	5	WP2EF	0.1			
ALT (3° APCH PATH)		750	800	940	1120	1440	1760	2080	2160	2200			



CATEGORY	A	B	C	D
LNAV/VNAV		750 (314-1.7)		NOT APPLICABLE
LNAV		940 (501-2.8)		
CIRCLING*	1040 (601-2.4)		1130 (691-4.0)	
ALTERNATE		(1101-4.4)	(1191-6.0)	

- NOTES**
1. MAX IAS: INITIAL : 210KT.
 2. NO CIRCLING IN SECTOR SOUTH-EAST OF RWY 23 & RWY 36 BEYOND 3 NM.

Changes: WPT NAMING CONVENTION.

WLGGN02-180