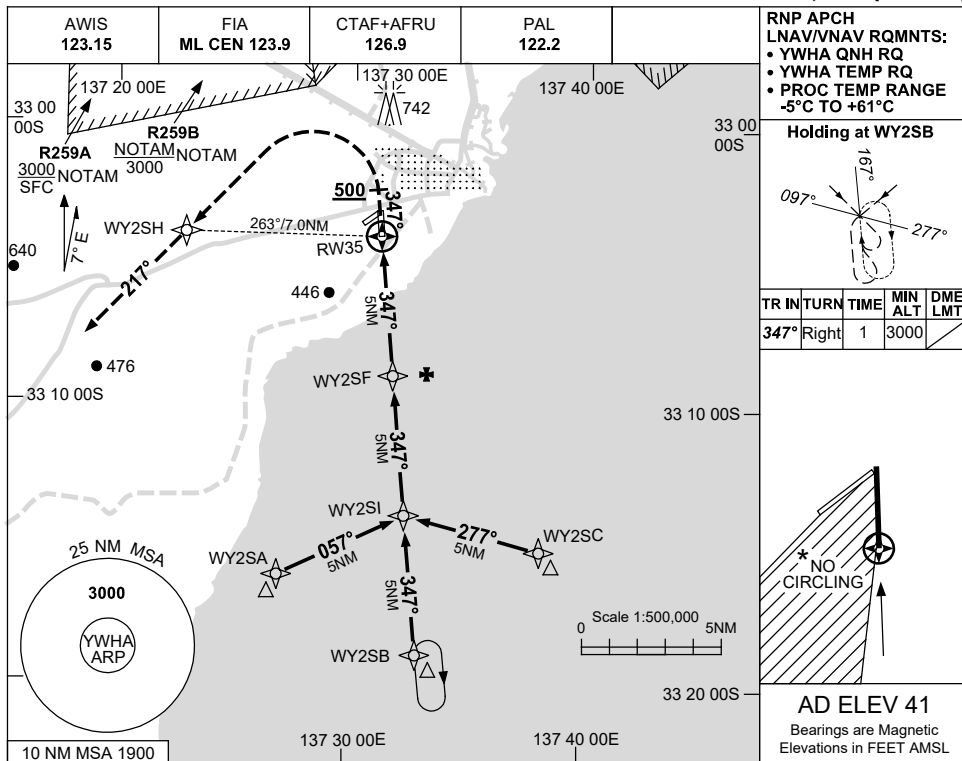


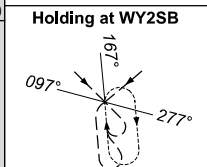
USE QNH

RNP RWY 35  
WHYALLA, SA (YWHA)

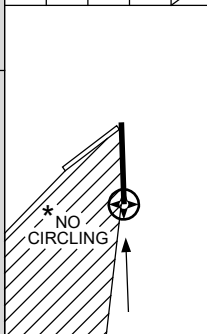
28 NOV 2024



RNP APCH  
LNAV/VNAV RQMNTS:  
• YWHA QNH RQ  
• YWHA TEMP RQ  
• PROC TEMP RANGE  
-5°C TO +61°C

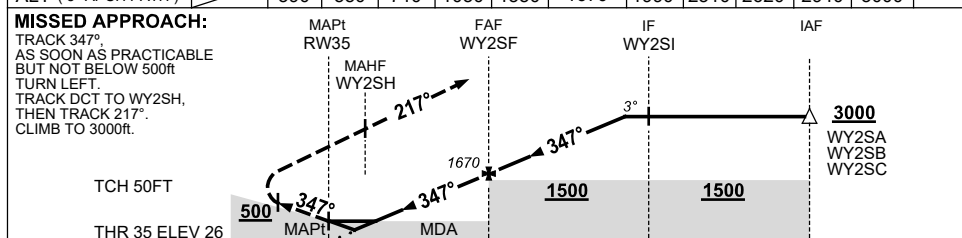


TR IN	TURN	TIME	MIN ALT	DME LMT
347°	Right	1	3000	



AD ELEV 41  
Bearings are Magnetic  
Elevations in FEET AMSL

NM TO NEXT WPT	RW35	1	1.5	2	3	4	WY2SF	1	2	3	4	4.2	
ALT (3° APCH PATH)		390	550	710	1030	1350	1670	1990	2310	2620	2940	3000	



NM TO RW35

NM TO RW35	0	5	10	15
MAPt				
MAHF				
IF				
IAF				

NOTES

- MAX IAS:  
INITIAL : 210KT.  
MISSED APCH : 185KT.  
TURN : 185KT.
- \* NO CIRCLING IN SECTOR WEST OF RWY 17 / 35 AND SOUTH OF RWY 05 / 23.

CATEGORY	A	B	C	D
LNAV/VNAV		390 (364-2.0)		NOT APPLICABLE
LNAV		550 (524-3.0)		
CIRCLING *	710 (669-2.4)		1240 (1199-4.0)	
ALTERNATE	(1169-4.4)		(1699-6.0)	

Changes: MISSED APCH SPEED, WPT NAMING CONVENTION, Editorial.

WHAGN02-181