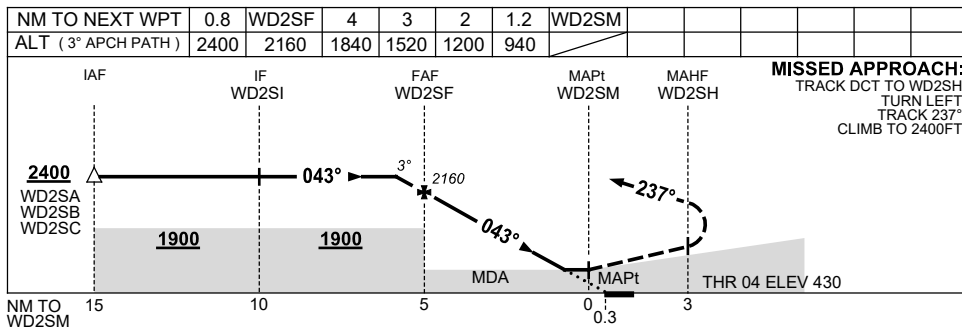
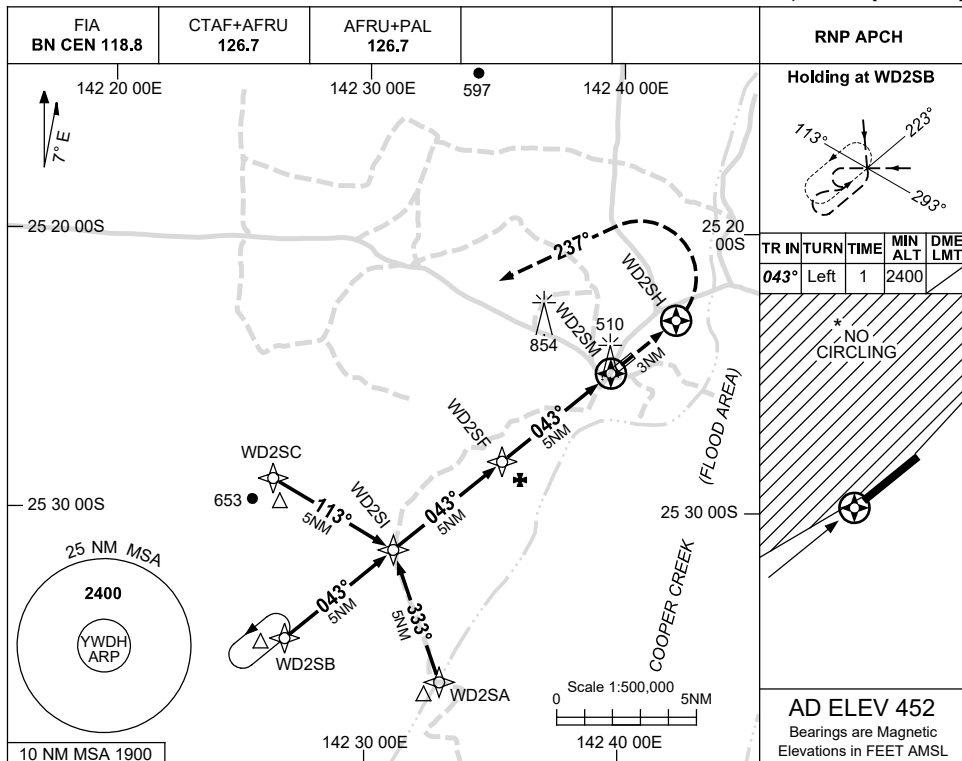


USE QNH

RNP RWY 04
WINDORAH, QLD (YWDH)

15 JUN 2023



MISSED APPROACH:
TRACK DCT TO WD2SH,
TURN LEFT,
TRACK 237°,
CLIMB TO 2400FT.

NOTES

- 1. MAX IAS: INITIAL : 210KT.
- * 2. NO CIRCLING N OF RWY 04/22.

CATEGORY	A	B	C	D
LNAV	940 (510-2.9)			NOT APPLICABLE
CIRCLING *	1060 (608-2.4)		1160 (708-4.0)	
ALTERNATE	(1108-4.4)		(1208-6.0)	

Changes: MAG VAR, WPT NAMING CONVENTION.

WDHGN01-175