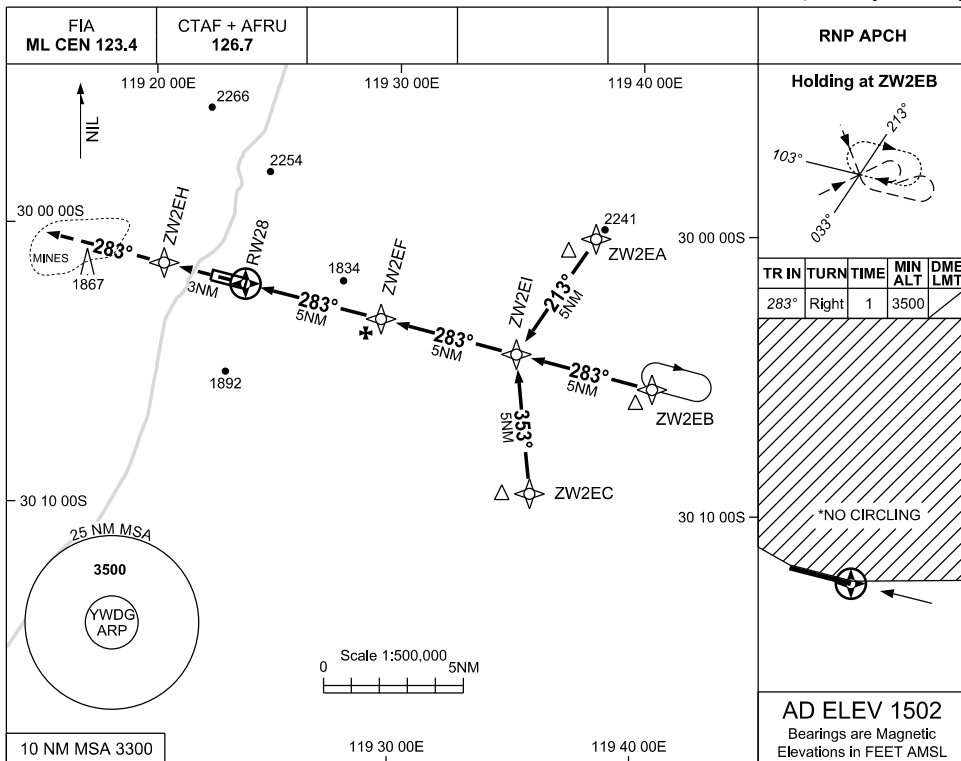


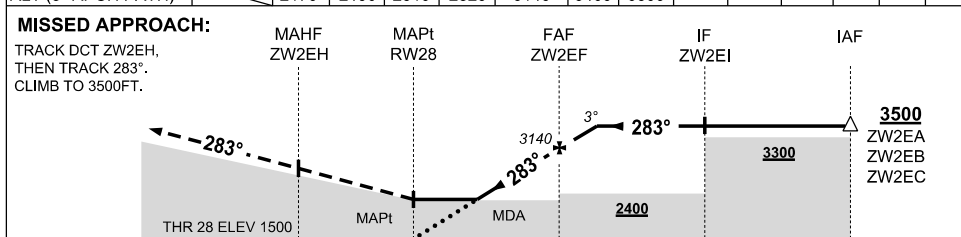
USE QNH

RNP RWY 28  
WINDARLING, WA (YWDG)

7 SEP 2023



NM TO NEXT WPT	RW28	1.9	2	3	4	ZW2EF	1	1.1				
ALT (3° APCH PATH)	2170	2190	2510	2820	3140	3460	3500					



NOTES

CATEGORY	A	B	C	D
LNAV	2170 (668-3.8)			NOT AUTHORISED
CIRCLING*	2170 (668-2.4)		2400(898-4.0)	
ALTERNATE	(1168-4.4)		(1398-6.0)	

- MAX IAS:  
INITIAL : 210KT
- NO CIRCLING  
N OF RWY 10/28
- CAUTION:** CHECK BLASTING TIMES WITH AD OPR

Changes: CHART TITLE, PBN SPECIFICATION BOX

WDGGN02-176