

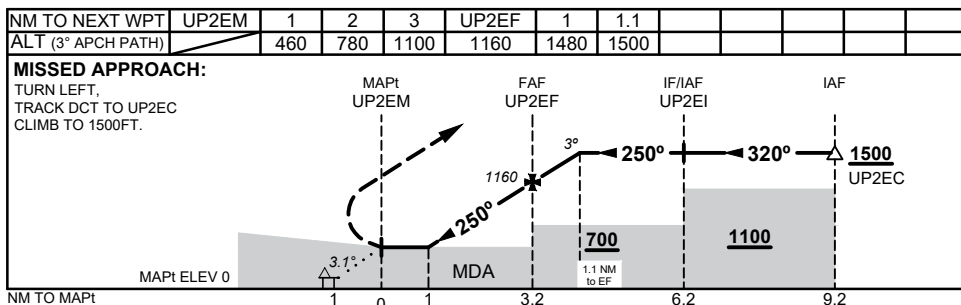
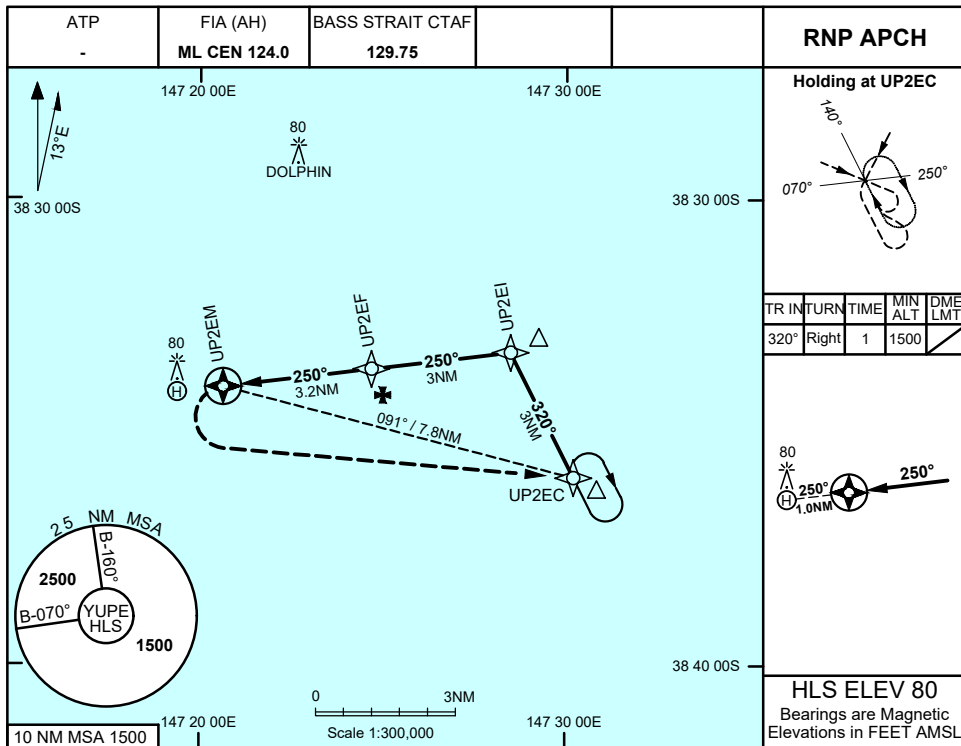
# FOR CASA APPROVED OPERATORS ONLY

## USE QNH

RNP 250

23 MAR 2023

## PERCH PLATFORM, VIC (YUPE)



### NOTES

1. MAX IAS:  
HOLDING: 120 KT  
INITIAL, INTERMEDIATE: 120KT  
FINAL, MISSED APP: 90KT
2. KEY LEAD IN FEATURES:  
PLATFORM AT HLS
- \*3. MDH BASED ON MAPt ELEV

CATEGORY	H
LNAV (NON-VAA, 4.2% MAP), AREA QNH	<b>460</b> (460* - 1.9)
ALTERNATE	N/A

Changes: CHART TITLE, WPT IDENTs, LOCATION NAME, Editorial

UPEGN02-174

# FOR CASA APPROVED OPERATORS ONLY