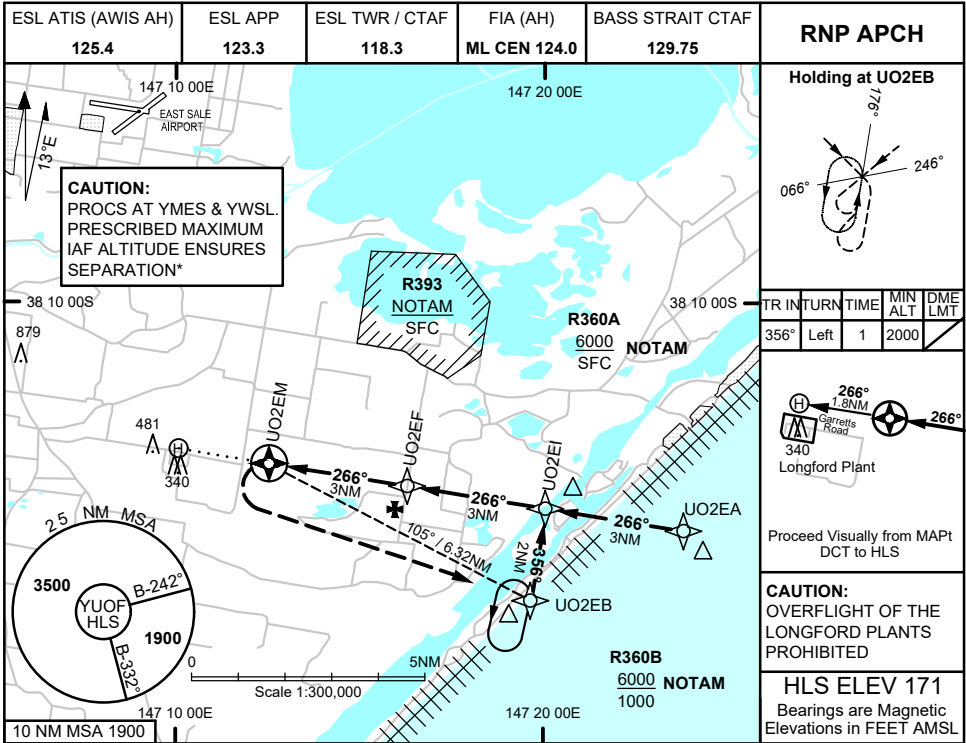


**FOR CASA APPROVED OPERATORS ONLY
USE QNH**

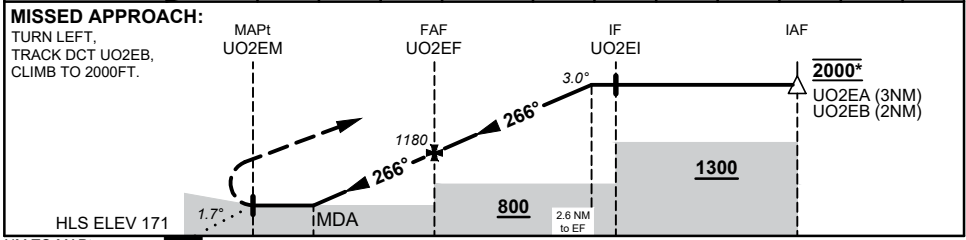
RNP 266

13 JUN 2024

LONGFORD HELIPORT, VIC (YUOF)



NM TO NEXT WPT	UO2EM	1	1.3	2	UO2EF	1	2	2.6		
ALT (3° APCH PATH)		540	620	860	1180	1500	1810	2000		



NOTES

- MAX IAS:
HOLDING: 90KTS
ALL SEGMENTS: 90KTS
- CLEARANCE REQUIRED
WHEN R360 ACTIVE
- KEY LEAD IN FEATURES:
GARRETS ROAD,
LONGFORD PLANTS
AND GAS FLARES LEFT
OF MAPt.

CATEGORY	H
LNAV (NON VAA) USING ESL QNH (4.2% MAP)	540 (369 - 3.4)
LNAV (NON VAA, 4.2% MAP)	620 (449 - 3.4)
CIRCLING	NOT APPLICABLE
ALTERNATE	(949 - 5.4)

Changes: REMOVED R391A & R391B, ADDED R393, NOTE 2

UOFGN01-179

FOR CASA APPROVED OPERATORS ONLY