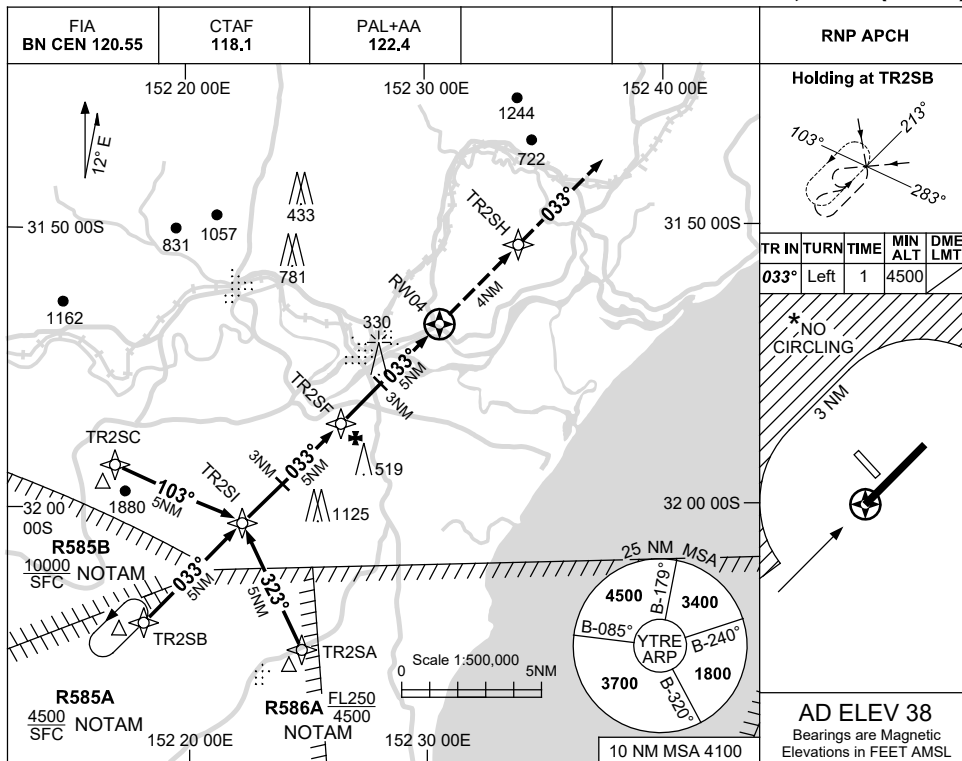


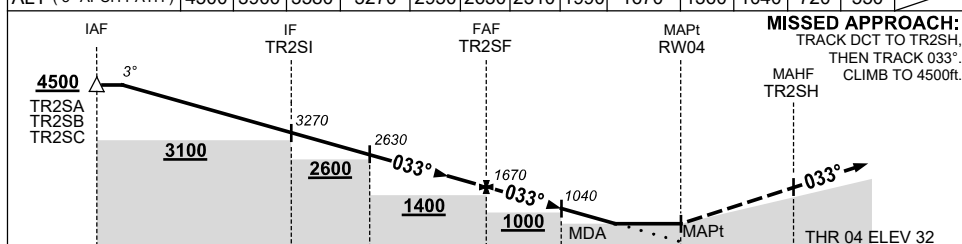
USE QNH

RNP RWY 04
TAREE, NSW (YTRE)

28 NOV 2024



NM TO NEXT WPT	3.9	2	1	TR2SI	4	3	2	1	TR2SF	4	3	2	1.5	RW04
ALT (3° APCH PATH)	4500	3900	3580	3270	2950	2630	2310	1990	1670	1360	1040	720	550	



MISSED APPROACH:
TRACK DCT TO TR2SH,
THEN TRACK 033°
CLIMB TO 4500ft.

NM TO RW04: 15, 10, 8, 5, 3, 0, 4
THR 04 ELEV 32

NOTES

- MAX IAS:
INITIAL : 210KT.
- * NO CIRCLING NW OF RWY 04 / 22 BEYOND 3NM.
- AWIS (PHONE)
02 9353 6452
- CLR RQ FM WILLY APP (135.7) PRIOR TO COMMENCING APCH WHEN R585A-B AND/OR R586A ACTIVE.

CATEGORY	A	B	C	D
LNAV	550 (512-2.9)			NOT APPLICABLE
CIRCLING *	790 (752-2.4)	890 (852-4.0)		
ALTERNATE	(1252-4.4)	(1352-6.0)		

Changes: R585A-B REPLACES R584A-B, R586A REPLACES R588A.

TREGN04-181