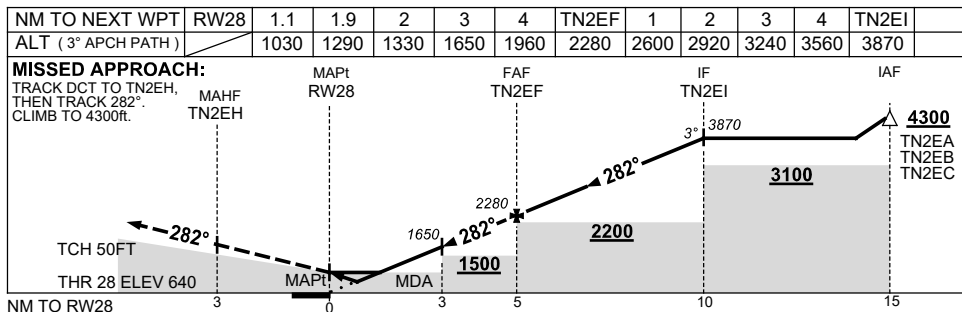
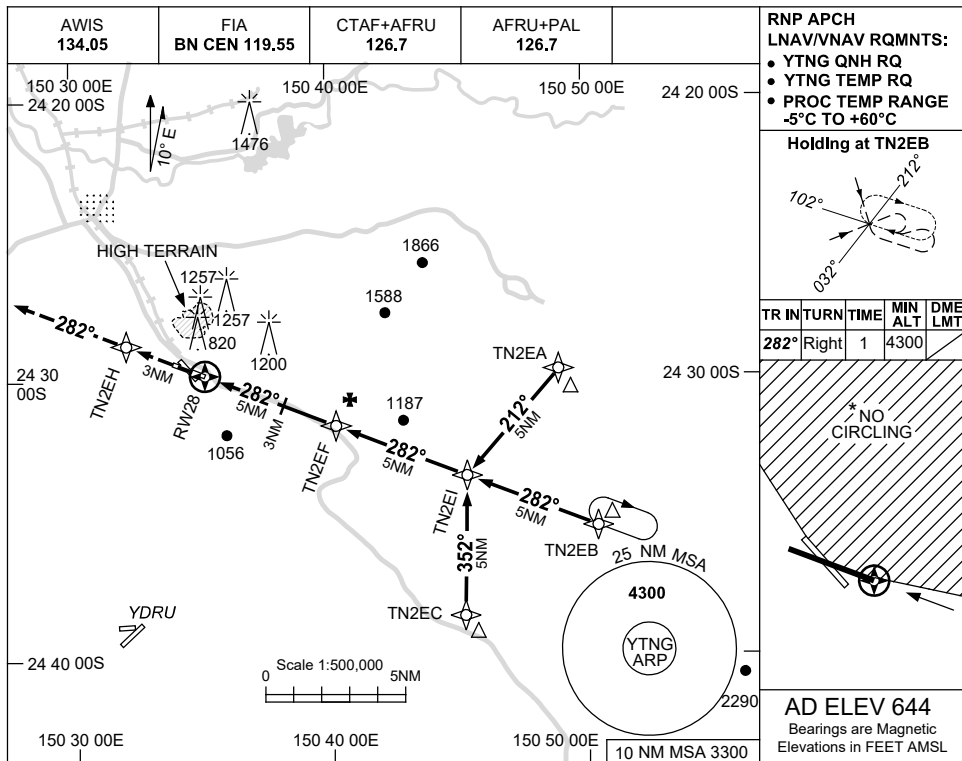


USE QNH

RNP RWY 28  
THANGOOL, QLD (YTNG)

13 JUN 2024



**NOTES**

CATEGORY	A	B	C	D
LNAV/VNAV	1030 (390-2.2)			NOT APPLICABLE
LNAV	1290 (646-3.7)			
CIRCLING *	1700 (1056-2.4)		1800 (1156-4.0)	
ALTERNATE	(1556-4.4)		(1656-6.0)	

1. MAX IAS: INITIAL : 210KT.
- \* 2. NO CIRCLING IN SECTOR NORTH OF RWYS 14/32 & 10/28.

Changes: LNAV MINIMA, CAT C CIRCLING AND ALTERNATE MINIMA, SEGMENT MINIMA, Editorial.

TNGGN02-179