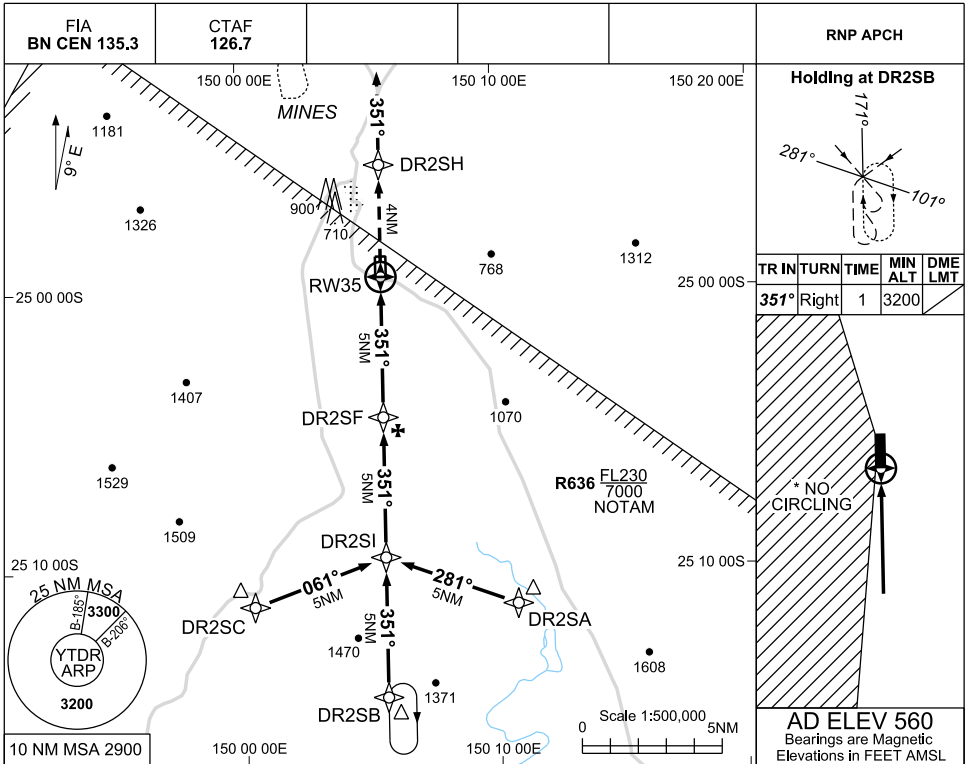


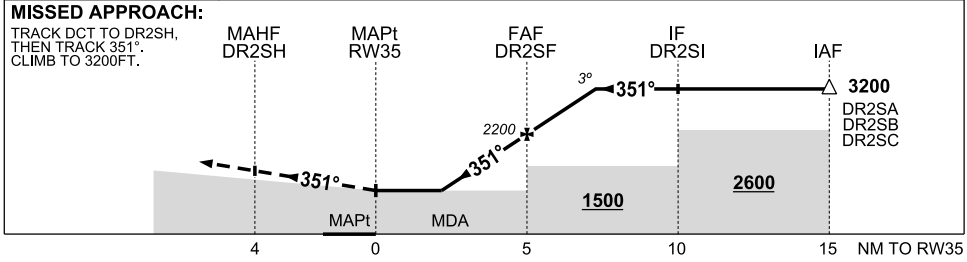
USE QNH

RNP S  
THEODORE, QLD (YTDR)

13 JUN 2024



NM TO NEXT WPT	RW35	2.0	2.4	3	4	DR2SF	1	2	3,2				
ALT (3° APCH PATH)		1240	1370	1560	1880	2200	2520	2840	3200				



**NOTES**

1. MAX IAS INITIAL: 210KTS
- \*2. NO CIRCLING WEST OF RWY 17/35

CATEGORY	A	B	C	D
* CIRCLING	1240 (680-2.4)		1370 (810-4.0)	NOT APPLICABLE
ALTERNATE	(1180-4.4)		(1310-6.0)	

Changes: MSA 25NM SECTOR ADDED

TDRGN02-179