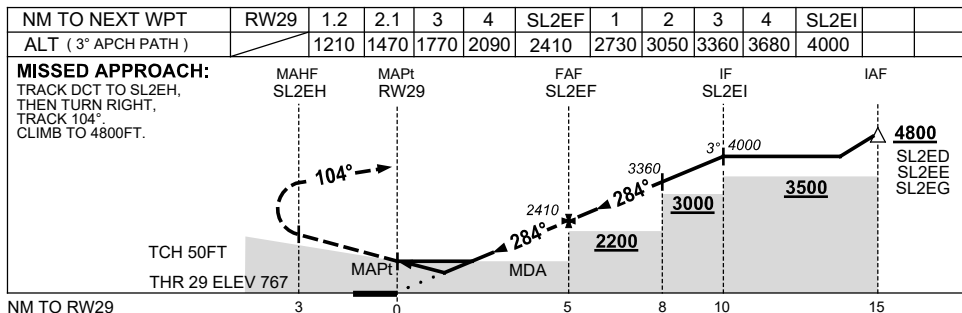
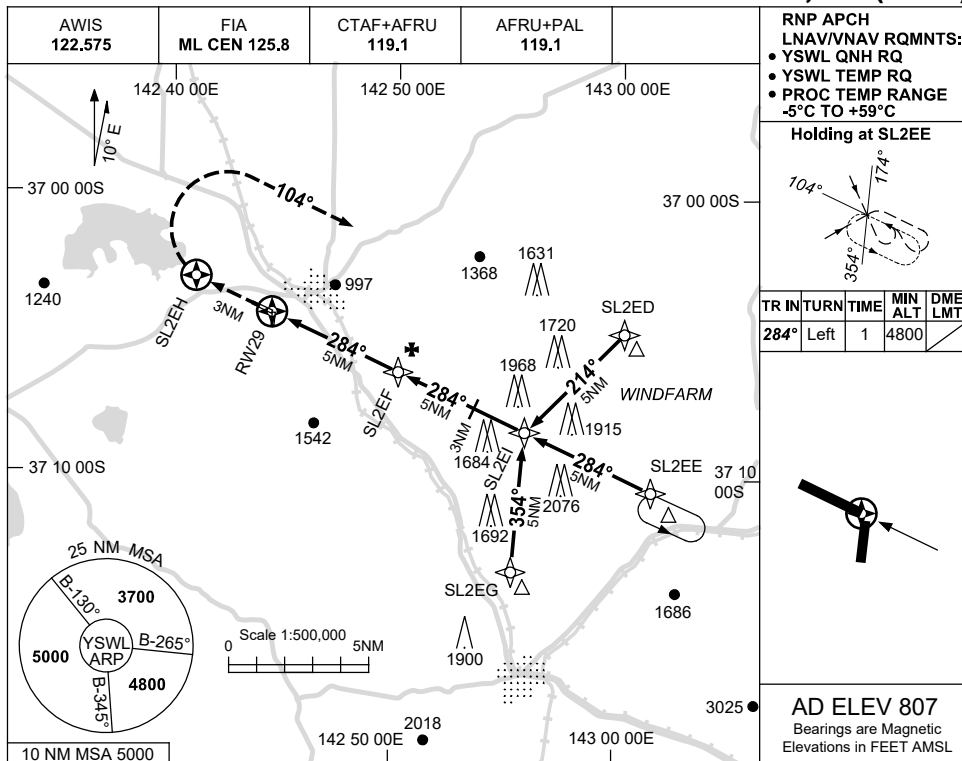


USE QNH

RNP RWY 29

**STAWELL, VIC (YSWL)**

15 JUN 2023



**NOTES**

CATEGORY	A	B	C	D
LNAV/VNAV		<b>1210</b> (443-2.5)		NOT APPLICABLE
LNAV		<b>1470</b> (703-4.0)		
CIRCLING	<b>2170</b> (1363-2.4)		<b>2470</b> (1663-4.0)	
ALTERNATE	(1863-4.4)		(2163-6.0)	

1. MAX IAS:  
 INITIAL : 210KT.  
 HOLDING: 210KT.

Changes: MSA, START ALT, MIN HOLD ALT, WPT NAMING, CHART TITLE, PBN SPEC BOX, Editorial.

SWLGN02-175