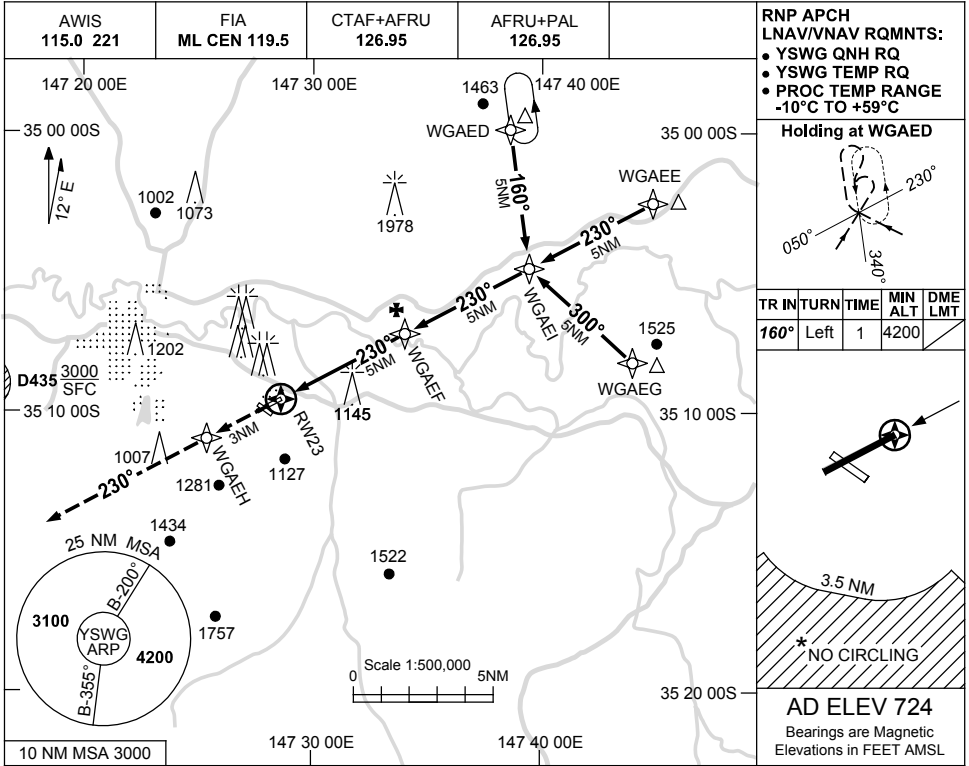


USE QNH

RNP RWY 23

28 NOV 2024

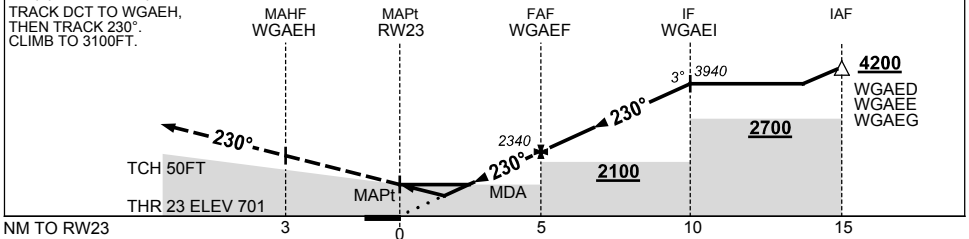
WAGGA WAGGA, NSW (YSWG)



NM TO NEXT WPT	RW23	1.6	2.3	3	4	WGAEF	1	2	3	4	WGAEI
ALT (3° APCH PATH)		1250	1470	1710	2020	2340	2660	2980	3300	3620	3940

**MISSED APPROACH:**

TRACK DCT TO WGAEH,  
THEN TRACK 230°. CLIMB TO 3100FT.



**NOTES**

CATEGORY	A	B	C	D
LNAV/VNAV		1250 (549-3.1)		
LNAV		1470 (769-4.4)		
CIRCLING *	1710 (986-2.4)	1810 (1086-4.0)	2010 (1286-5.0)	
ALTERNATE	(1486-4.4)	(1586-6.0)	(1786-7.0)	

1. MAX IAS: INITIAL : 210KT.
- \* 2. NO CIRCLING IN SECTOR SOUTH OF RWY 05/23 AND RWY 12/30 BEYOND 3.5NM.

Changes: R408 AND R415 DELETED.

SWGGN02-181