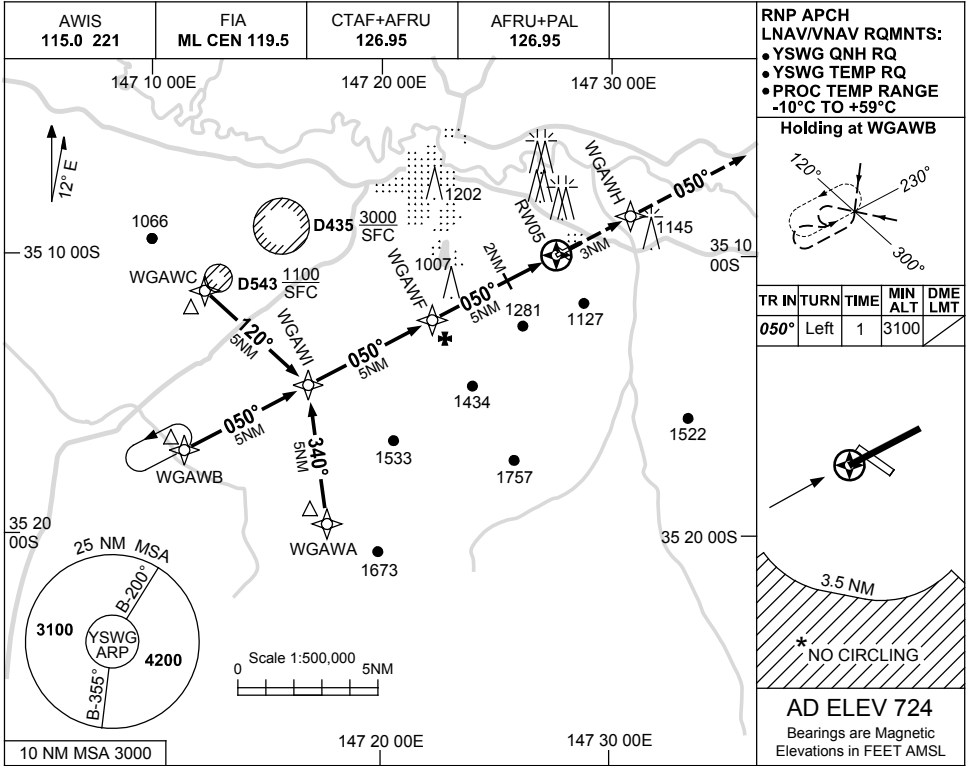


USE QNH

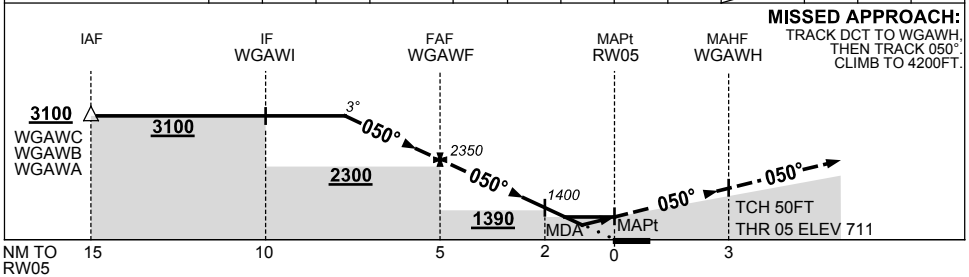
RNP RWY 05

28 NOV 2024

WAGGA WAGGA, NSW (YSWG)



NM TO NEXT WPT	2.3	2	1	WGAWF	4	3	2	1.8	0.9	RW05			
ALT (3° APCH PATH)	3100	2990	2670	2350	2030	1720	1400	1340	1050				



CATEGORY	A	B	C	D	
LNAV/VNAV		1050	(339-1.9)		
LNAV		1340	(629-3.6)		
CIRCLING *	1710	(986-2.4)	1810	(1086-4.0) 2010	(1286-5.0)
ALTERNATE		(1486-4.4)	(1586-6.0)	(1786-7.0)	

- NOTES**
1. MAX IAS:
INITIAL : 210KT.
 - *2. NO CIRCLING IN SECTOR SOUTH OF RWY 05/23 AND RWY 12/30 BEYOND 3.5NM.

Changes: R408 AND R415 DELETED.

SWGGN01-181