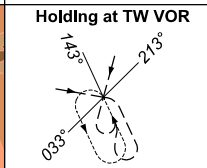
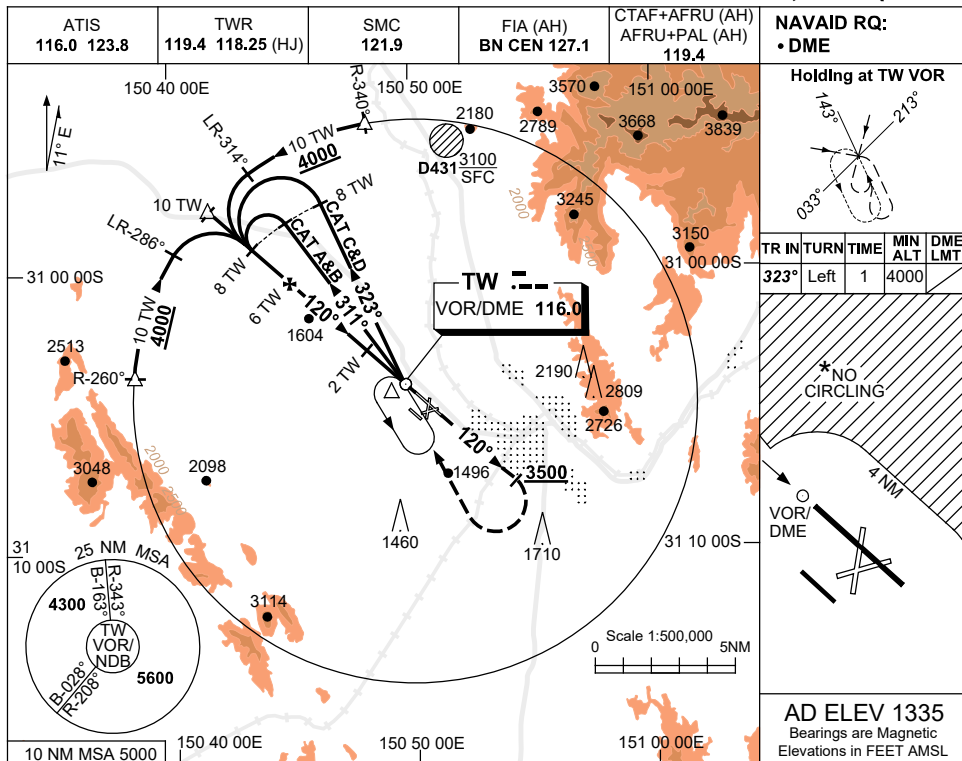


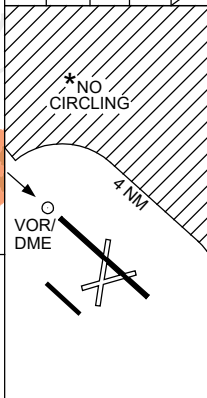
USE QNH

VOR RWY 12L  
TAMWORTH, NSW (YSTW)

5 SEP 2024

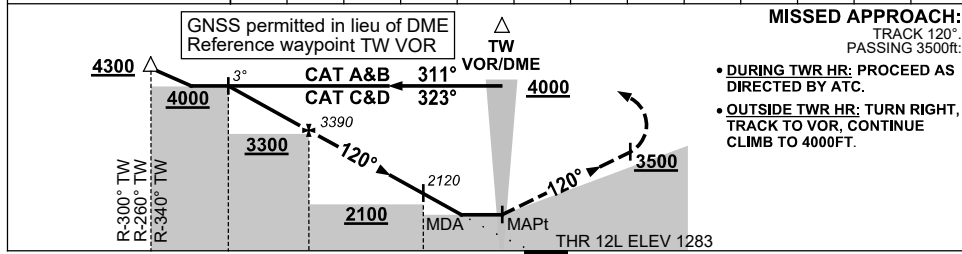


TR IN	TURN	TIME	MIN ALT	DME LMT
323°	Left	1	4000	



**AD ELEV 1335**  
Bearings are Magnetic  
Elevations in FEET AMSL

DIST TO TW DME	7.9	7	6	5	4	3	2	1.2				
ALT (3° APCH PATH)	4000	3710	3390	3070	2750	2440	2120	1860				



**MISSED APPROACH:**  
TRACK 120°  
PASSING 3500ft:  
• DURING TWR HR: PROCEED AS DIRECTED BY ATC.  
• OUTSIDE TWR HR: TURN RIGHT, TRACK TO VOR, CONTINUE CLIMB TO 4000FT.

- NOTES**
- MAX IAS:  
INITIAL : 210KT.
  - CAT A,B&C NO CIRCLING NE OF RWY 12L/30R BEYOND 4NM. MAX IAS 170KT.
  - CAT D NO CIRCLING NE OF RWY 12L/30R.
  - COLOUR: SEE SPEC NOTICES.

CATEGORY	A	B	C	D
S-I VOR/DME	1860 (577-3.3)			
CIRCLING *	2110 (775-2.4)	2400 (1065-4.0)	2400# (1065-5.0)	
ALTERNATE	(1275-4.4)	(1565-6.0)	(1565-7.0)	

Changes: THR 12L ELEV, DIST-ALT TABLE, FAF-2NM FIX MINIMA. STWV001-180