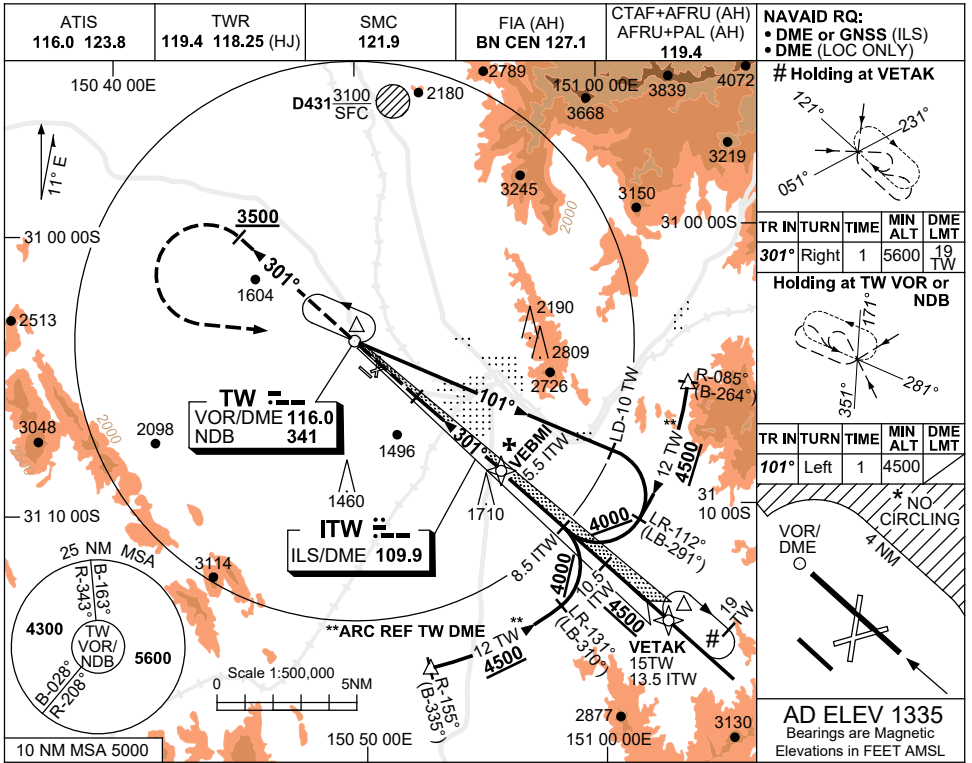


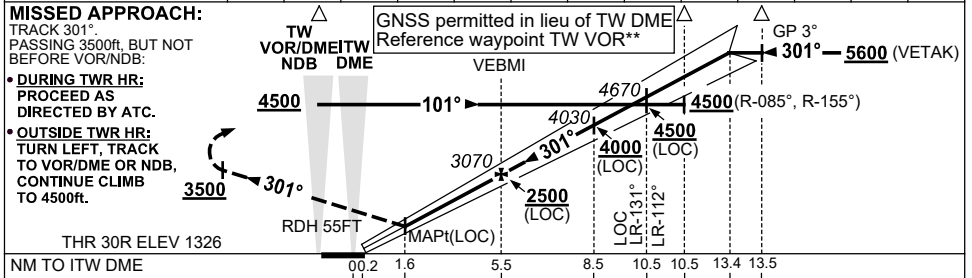
USE QNH

ILS-Z or LOC-Z RWY 30R
TAMWORTH, NSW (YSTW)

28 NOV 2024



DIST TO ITW DME	2.1	3	4	5	5.5	7	8	8.5	10	10.5	12	13	13.4
ALT (3° APCH PATH)	1990	2280	2600	2910	3070	3550	3870	4030	4500	4670	5140	5460	5600



CATEGORY	A	B	C	D
S-I ILS		1740 (414)	2.4 (VIS 1.8 WITH ACTUAL QNH)	
S-I LOC/DME		1990 (664-3.8)		
CIRCLING*	2110 (775-2.4)		2400 (1065-4.0)	2400# (1065-5.0)
ALTERNATE	(1275-4.4)		(1565-6.0)	(1565-7.0)

NOTES

- MAX IAS: HOLDING AT VETAK : 210KT.
- CAT A,B&C NO CIRCLING NE OF RWY 12L/30R BEYOND 4NM. MAX IAS 170KT.
- CAT D NO CIRCLING NE OF RWY 12L/30R.
- COLOUR: SEE SPEC NOTICES.

Changes: WPT BRADD RENAMED TO VETAK. STWII01-181