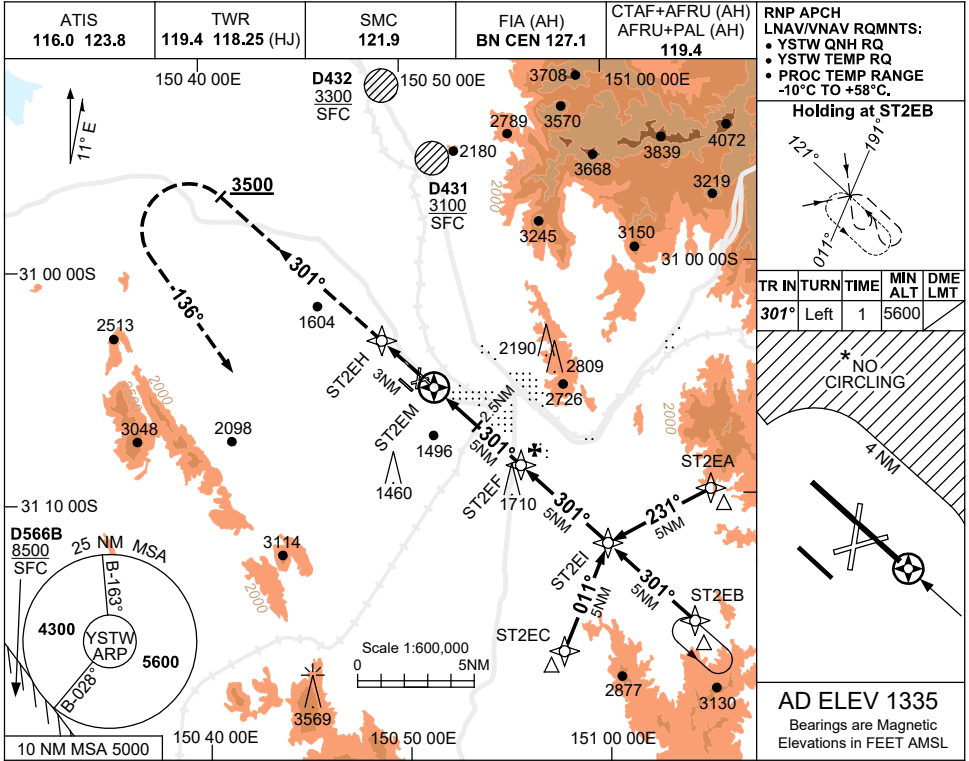


USE QNH

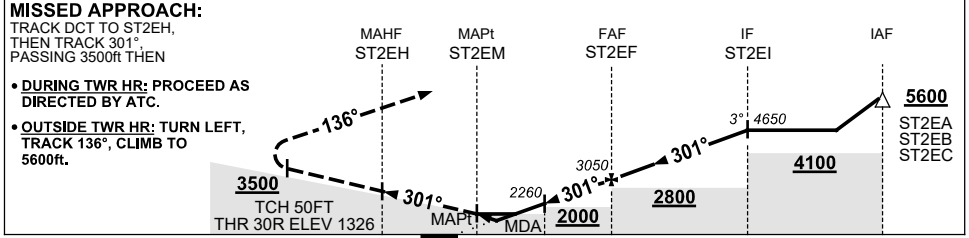
RNP RWY 30R

5 SEP 2024

TAMWORTH, NSW (YSTW)



NM TO NEXT WPT	ST2EM	0.8	1.3	2	2.5	3	4	ST2EF	1	2	3	4	ST2EI
ALT (3° APCH PATH)		1700	1870	2100	2260	2420	2740	3050	3370	3690	4010	4330	4650



**NOTES**

- MAX IAS: INITIAL : 220KLT.
- CAT A,B&C NO CIRCLING NE OF RWY 12L/30R BEYOND 4NM. MAX IAS 170KLT.
- CAT D NO CIRCLING NE OF RWY 12L/30R.
- HLDG NOT CONTAINED IN CTA.
- COLOUR: SEE SPEC NOTICES.

CATEGORY	A	B	C	D
LNAV/VNAV		1700 (374-2.1)		
LNAV		1870 (544-3.1)		
CIRCLING *	2110 (775-2.4)		2400 (1065-4.0)	2400#(1065-5.0)
ALTERNATE	(1275-4.4)		(1565-6.0)	(1565-7.0)

Changes: WPT NAMING CONVENTION, FAF-2.5NM FIX MINIMA, D432 ADDED.

STWGN02-180