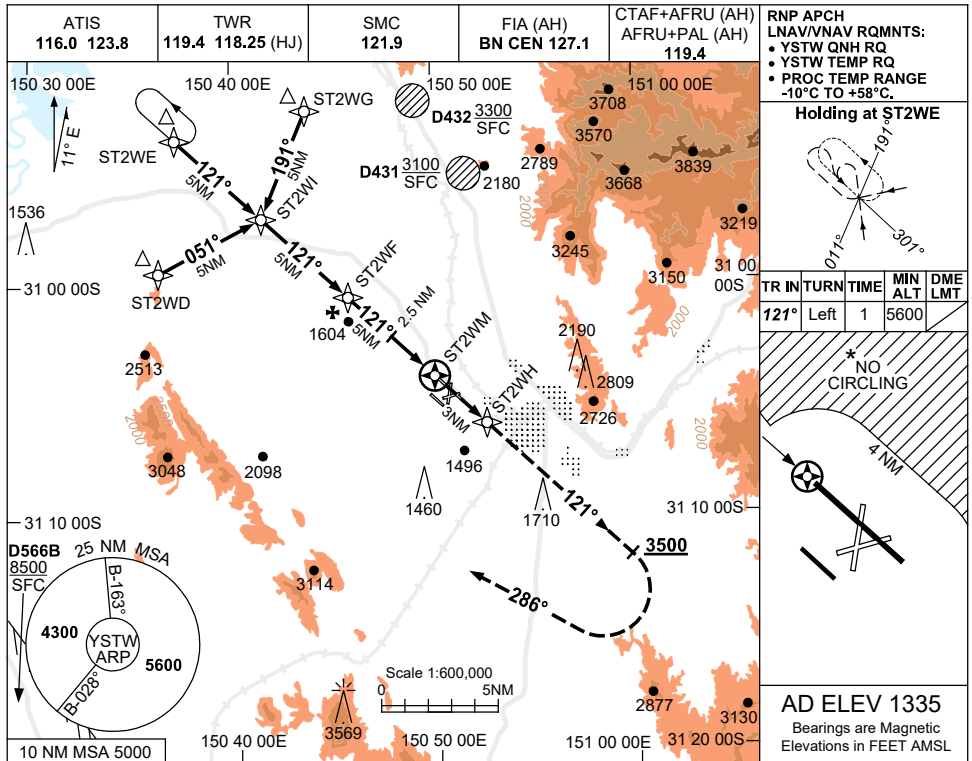


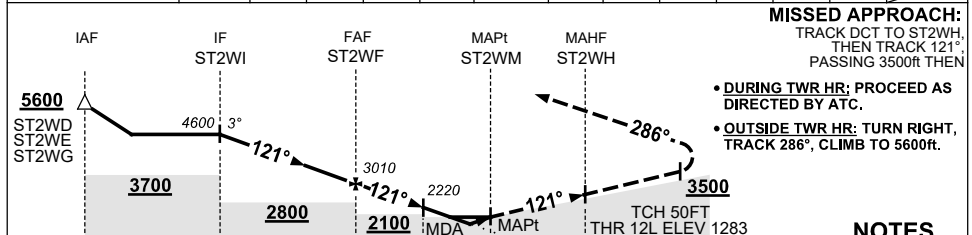
USE QNH

RNP RWY 12L
TAMWORTH, NSW (YSTW)

5 SEP 2024



NM TO NEXT WPT	ST2WI	4	3	2	1	ST2WF	4	3	2.5	2	1.4	0.8	ST2WM
ALT (3° APCH PATH)		4600	4280	3970	3650	3330	3010	2690	2370	2220	2060	1880	1660



NOTES

1. MAX IAS: INITIAL : 220KT.
2. CAT A,B&C NO CIRCLING NE OF RWY 12L/30R BEYOND 4NM. MAX IAS 170KT.
3. CAT D NO CIRCLING NE OF RWY 12L/30R.
4. HLDG NOT CONTAINED IN CTA.
5. COLOUR: SEE SPEC NOTICES.

CATEGORY	A	B	C	D
LNAV/VNAV		1660 (377-2.1)		
LNAV		1880 (597-3.4)		
CIRCLING *	2110 (775-2.4)		2400 (1065-4.0)	2400#(1065-5.0)
ALTERNATE	(1275-4.4)		(1565-6.0)	(1565-7.0)

Changes: WPT NAMING CONVENTION, THR 12L ELEV, FAF-2.5NM FIX MINIMA, D432 ADDED. STWGN01-180