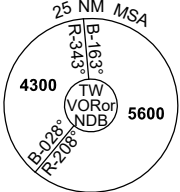


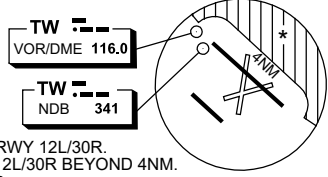
DME or GNSS ARRIVAL PROCEDURES TAMWORTH, NSW (YSTW) Page 1

24 MAR 2022

ATIS 116.0 123.8	TWR 119.4 118.25 (HJ)	SMC 121.9	FIA (AH) BN CEN 127.1	CTAF+AFRU (AH) AFRU+PAL (AH) 119.4	Bearings are Magnetic Elevations in FEET AMSL
----------------------------	---------------------------------	---------------------	---------------------------------	---	--



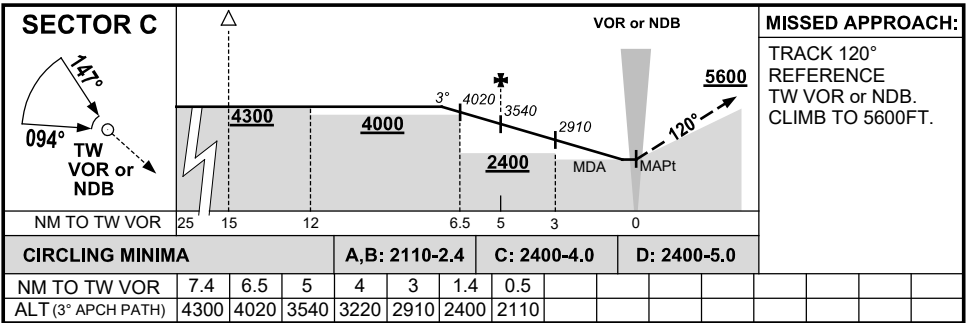
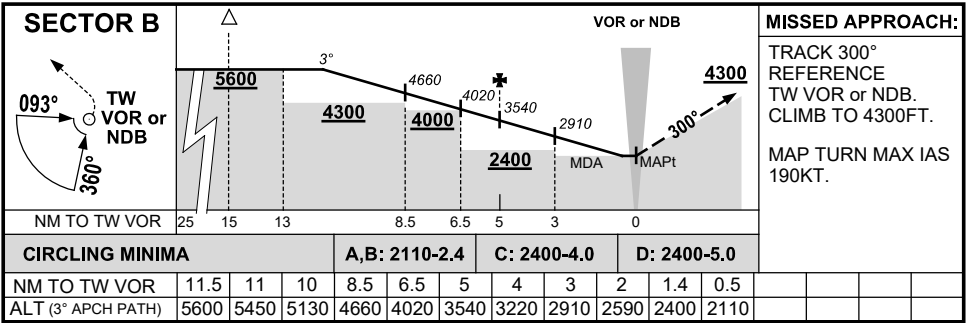
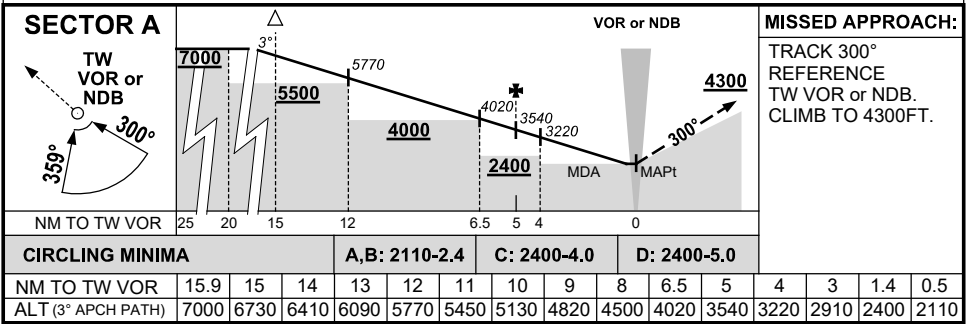
DME USING TW DME REFERENCE WAYPOINT TW VOR



* MAX IAS CIRCLING 170KT WHEN NE OF RWY 12L/30R.
 CAT A, B & C NO CIRCLING NE OF RWY 12L/30R BEYOND 4NM.
 CAT D NO CIRCLING NE OF RWY 12L/30R.

10 NM MSA 5000

AD ELEV 1335



Changes: AD ELEV, Editorial.

STWDG01-170