

**STANDARD INSTRUMENT ARRIVAL (STAR)
BOREE FOUR PAPA ARRIVAL (RNAV)
SYDNEY/KINGSFORD SMITH, NSW (YSSY)**

28 NOV 2024

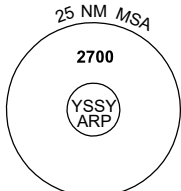
| | | | | | |
|-----------------------|--------------|-------------------|--------------|---|--|
| ATIS 118.55 126.25 | APP 124.4 | DIRECTOR 126.1 | TWR 120.5 | SMC E OF RWY 16R/34L 121.7 W OF RWY 16R/34L 126.5 | Bearings are Magnetic Elevations in FEET AMSL |
|-----------------------|--------------|-------------------|--------------|---|--|

NOT TO SCALE

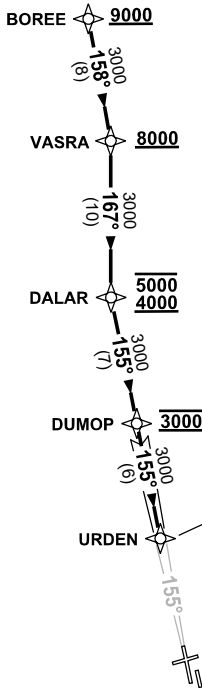


**PRM OPS *
DUAL VHF COMS
REQUIRED**

| ATC APCH SPEEDS | |
|-----------------|----------|
| NM FM TD | SPEED KT |
| URDEN | 185 -160 |
| 5 | 160 -150 |



10 NM MSA 2100



**SPEED
MAX IAS 250KT
BELOW 10,000ft**

RNP 1

**MAX IAS
185KT**

ARRIVAL: BOREE FOUR PAPA

RWY 16R:

- Cross BOREE AT or ABV 9000ft, then
- From BOREE track 158° to VASRA
- Cross VASRA AT or ABV 8000ft
- Turn RIGHT, track 167° to DALAR
- Cross DALAR between 4000ft and 5000ft
- Turn LEFT, track 155° to DUMOP
- Cross DUMOP AT 3000ft
- From DUMOP track 155° via FINAL APCH COURSE to URDEN
- MAX IAS 185KT from URDEN
- Track via GLS RWY 16R or ILS RWY 16R

*** PRM OPS : SEE PRM USER INST FOR ADDITIONAL REQUIREMENTS.**

**COMMUNICATIONS FAILURE: PROCEDURE IN IMC
IF ABLE CTC SY APP +61 2 9556 6515**

- Squawk 7600, comply with vertical navigation requirements, but not below MSA.
- Track via the latest STAR clearance to the nominated runway, then fly the most suitable approach in accordance with ERSA EMERG Section 1.5.

Changes: BOREE ALT RQMNTS, VALIDITY INDICATOR.

SSYSR09-181