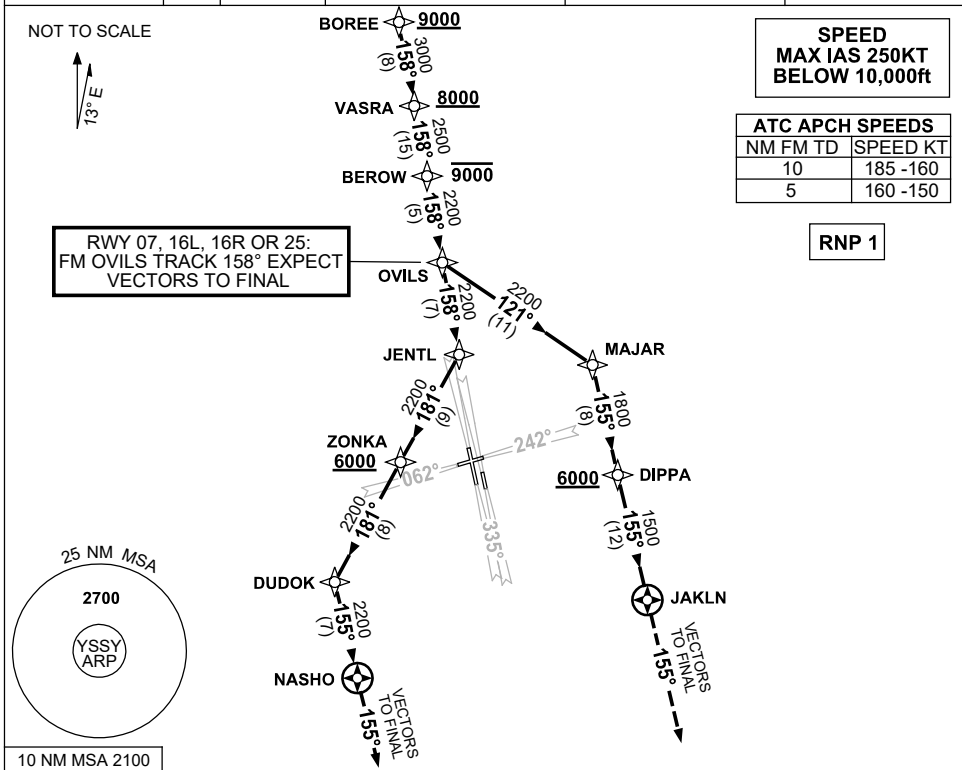


**STANDARD INSTRUMENT ARRIVAL (STAR)
BOREE FOUR ALPHA ARRIVAL (RNAV)
SYDNEY/KINGSFORD SMITH, NSW (YSSY)**

28 NOV 2024

| | | | | | |
|-----------------------|--------------|--------------------------------|--|---|--|
| ATIS 118.55 126.25 | APP 124.4 | DIRECTOR E 125.3 W 126.1 | TWR RWYS 16R/34L, 07/25 120.5 RWYS 16L/34R 124.7 | SMC E OF RWY 16R/34L 121.7 W OF RWY 16R/34L 126.5 | Bearings are Magnetic Elevations in FEET AMSL |
|-----------------------|--------------|--------------------------------|--|---|--|



ARRIVAL: **BOREE FOUR ALPHA**
Cross BOREE AT or ABV 9000ft, then

- From BOREE track 158° to VASRA
Cross VASRA AT or ABV 8000ft
- Track 158° to BEROW
Cross BEROW AT or BLW 9000ft
- Track 158° to OVILS

RWY 07, 16L, 16R, or 25:

- Track 158°, **EXPECT** radar vectors to final

RWY 34L:

- Track 158° to JENTL
- Turn RIGHT, track 181° to ZONKA
Cross ZONKA AT or ABV 6000ft
- Track 181° to DUDOK
- Turn LEFT, track 155° to NASHO
- Track 155°, **EXPECT** radar vectors to final

RWY 34R:

- Turn LEFT, track 121° to MAJAR
- Turn RIGHT, track 155° to DIPPA
Cross DIPPA AT or ABV 6000ft
- Track 155° to JAKLN
- Track 155°, **EXPECT** radar vectors to final

NOTE: For RWY 34R during PRM operations, expect to track downwind until reaching 2000ft

**COMMUNICATIONS FAILURE: PROCEDURE IN IMC
IF ABLE CTC SY APP +61 2 9556 6515**

- Squawk 7600, comply with vertical navigation requirements, but not below MSA.
- Track via the latest STAR clearance to the nominated runway, then fly the most suitable approach in accordance with ERSA EMERG Section 1.5.

Changes: BOREE ALT RQMNTS, VALIDITY INDICATOR.

SSYSR06-181