

**STANDARD INSTRUMENT ARRIVAL (STAR)
RIVET FOUR ARRIVAL (RNAV)
SYDNEY/KINGSFORD SMITH, NSW (YSSY)**

28 NOV 2024

ATIS 118.55 126.25	APP 128.3	DIRECTOR 125.3 126.1	TWR RWYS 16R/34L, 07/25 120.5 RWYS 16L/34R 124.7	SMC E OF RWY 16R/34L 121.7 W OF RWY 16R/34L 126.5	Bearings are Magnetic Elevations in FEET AMSL
------------------------------	---------------------	------------------------------------	--	---	--

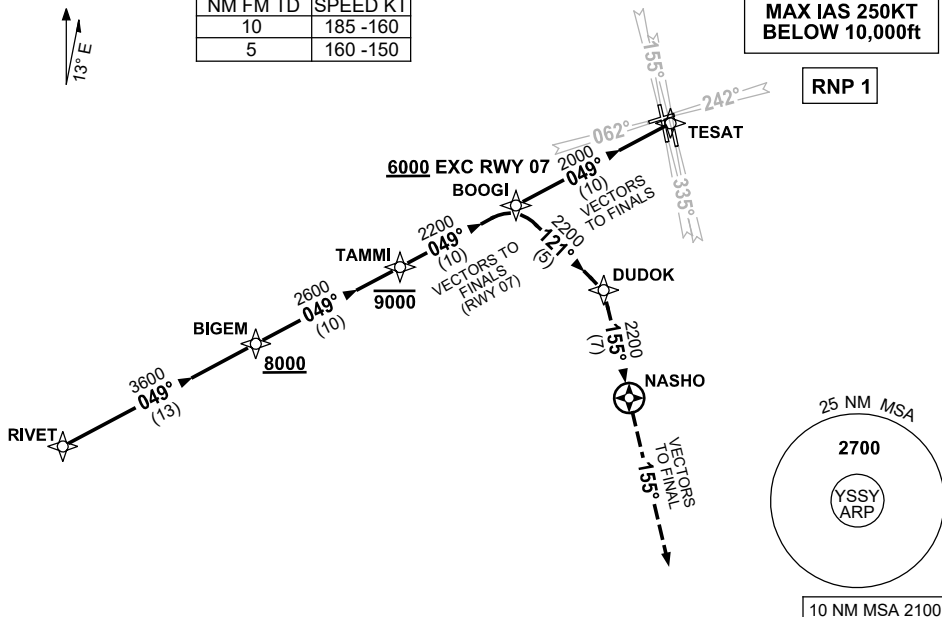
NOT TO SCALE



ATC APCH SPEEDS	
NM FM TD	SPEED KT
10	185 -160
5	160 -150

**SPEED
MAX IAS 250KT
BELOW 10,000ft**

RNP 1



ARRIVAL: RIVET FOUR

- From RIVET track 049° to BIGEM
Cross BIGEM AT or ABV 8000ft
- Track 049° to TAMMI
Cross TAMMI AT or BLW 9000ft

RWY 07:

- Track 049°, EXPECT radar vectors to final

RWY 16L,16R or 25:

- Track 049° to BOOGI
Cross BOOGI AT or ABV 6000ft
- Track 049° to TESAT
- EXPECT radar vectors to final

RWY 34L or 34R:

- Track 049° to BOOGI
Cross BOOGI AT or ABV 6000ft
- Turn RIGHT, track 121° to DUDOK
- Turn RIGHT, track 155° to NASHO
- Track 155°, EXPECT radar vectors to final

**COMMUNICATIONS FAILURE: PROCEDURE IN IMC
IF ABLE CTC SY APP +61 2 9556 6515**

- Squawk 7600, comply with vertical navigation requirements, but not below MSA.
- Track via the latest STAR clearance to the nominated runway, then fly the most suitable approach in accordance with ERSA EMERG Section 1.5.

Changes: RWY 07 TRANSITION.

SSYSR05-181