

**STANDARD INSTRUMENT ARRIVAL (STAR)
ODALE SEVEN ARRIVAL (RNAV)
SYDNEY/KINGSFORD SMITH, NSW (YSSY)**

24 MAR 2022

| | | | | | | | |
|------------------------------|---------------------|------------------------------------|--|------------------------|---|------------------------|--|
| ATIS 118.55 126.25 | APP 128.3 | DIRECTOR 125.3 126.1 | TWR RWYS 16R/34L, 07/25 RWYS 16L/34R | 120.5 124.7 | SMC E OF RWY 16R/34L W OF RWY 16R/34L | 121.7 126.5 | Bearings are Magnetic Elevations in FEET AMSL |
|------------------------------|---------------------|------------------------------------|--|------------------------|---|------------------------|--|

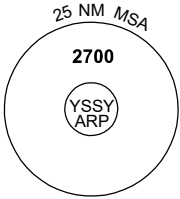
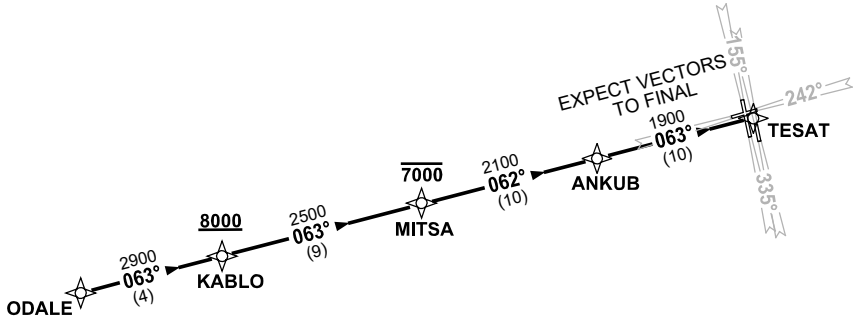
NOT TO SCALE



| ATC APCH SPEEDS | |
|-----------------|----------|
| NM FM TD | SPEED KT |
| 10 | 185 -160 |
| 5 | 160 -150 |

**SPEED
MAX IAS 250KT
BELOW 10,000FT**

RNP 1



10 NM MSA 2100

ARRIVAL: ODALE SEVEN

- From ODALE track 063° to KABLO
Cross KABLO AT or ABV 8000FT
- Track 063° to MITSА
Cross MITSА AT or BLW 7000FT
- Track 062° to ANKUB
- Track 063° to TESAT

EXPECT radar vectors to final approach course after MITSА

**COMMUNICATIONS FAILURE: PROCEDURE IN IMC
IF ABLE CTC SY APP +61 2 9556 6515**

- Squawk 7600, comply with vertical navigation requirements, but not below MSA.
- Track via the latest STAR clearance to the nominated runway, then fly the most suitable approach in accordance with ERSА EMERG Section 1.5.

Changes: Editorial.

SSYSR04-170