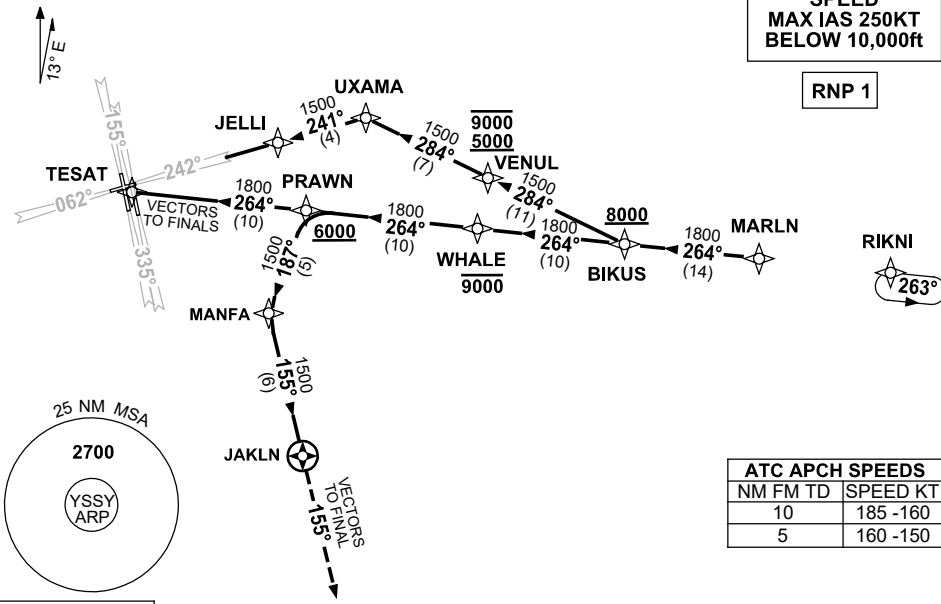


**STANDARD INSTRUMENT ARRIVAL (STAR)  
MARLN FIVE ARRIVAL (RNAV)  
SYDNEY/KINGSFORD SMITH, NSW (YSSY)**

24 MAR 2022

ATIS 118.55 126.25	APP 124.4	DIRECTOR 125.3 126.1	TWR RWYS 16R/34L, 07/25 120.5 RWYS 16L/34R 124.7	SMC E OF RWY 16R/34L 121.7 W OF RWY 16R/34L 126.5	Bearings are Magnetic Elevations in FEET AMSL
-----------------------	--------------	----------------------------	--	---	--

NOT TO SCALE



**NOTE: TRACKING VIA RIKNI SUBJECT TO ATC CLEARANCE**

**ARRIVAL: MARLN FIVE**

- From MARLN track 264° to BIKUS  
**Cross BIKUS AT or ABV 8000ft**

- RWY 25:**
- Track 284° to VENUL  
**Cross VENUL BTN 5000ft AND 9000ft**
  - Track 284° to UXAMA
  - Track 241° to JELLI for GLS RWY 25 or ILS RWY 25 or RNP RWY 25 or LOC RWY 25

- RWY 07, 34L, 16L, 16R:**
- Track 264° to WHALE  
**Cross WHALE AT or BLW 9000ft**
  - Track 264° to PRAWN  
**Cross PRAWN AT or ABV 6000ft**
  - Track 264° to TESAT, EXPECT radar vectors to final

- RWY 34R:**
- Track 264° to WHALE  
**Cross WHALE AT or BLW 9000ft**
  - Track 264° to PRAWN  
**Cross PRAWN AT or ABV 6000ft**
  - Turn LEFT, track 187° to MANFA
  - Turn LEFT, track 155° to JAKLN
  - Track 155°, EXPECT radar vectors to final

**NOTE:** For RWY 34R during PRM operations, expect to track downwind until reaching 2000ft.

**COMMUNICATIONS FAILURE: PROCEDURE IN IMC  
IF ABLE CTC SY APP +61 2 9556 6515**

- Squawk 7600, comply with vertical navigation requirements, but not below MSA.
- Track via the latest STAR clearance to the nominated runway, then fly the most suitable approach in accordance with ERS A EMERG Section 1.5.

Changes: Editorial.

SSYSR02-170