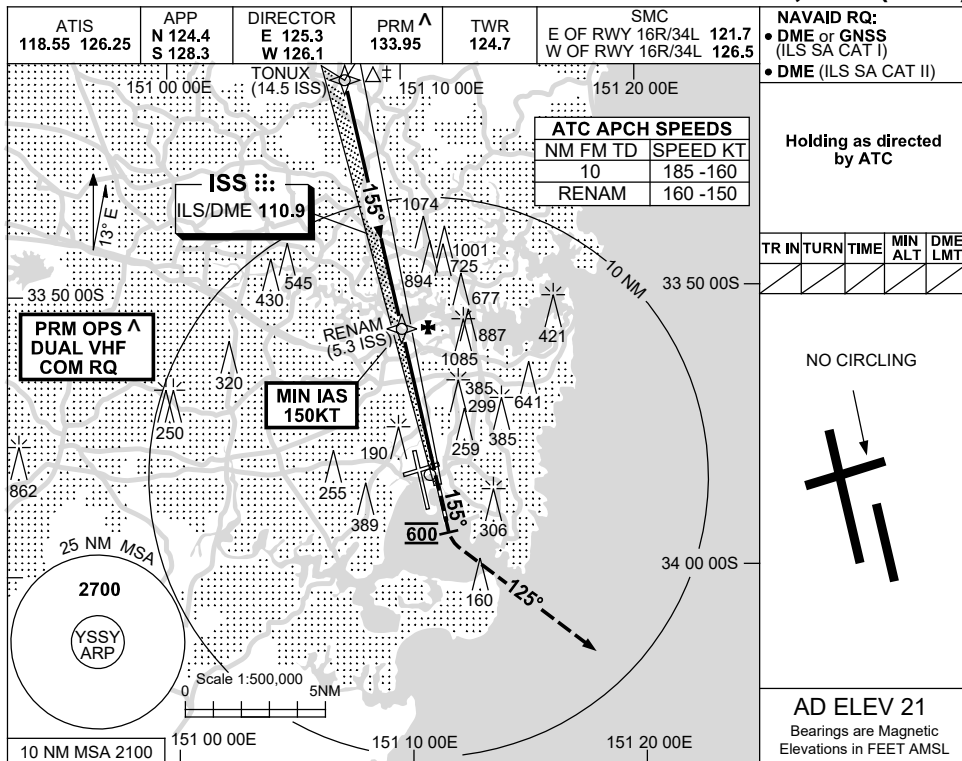
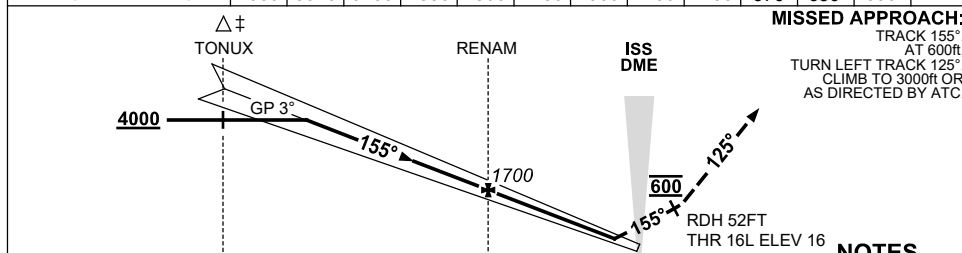


USE QNH ILS RWY 16L - Page 2
SYDNEY/KINGSFORD SMITH, NSW (YSSY)

13 JUN 2024



NM TO ISS DME	12.5	11	10	9	8	7	6	5.3	4	3	2	1	
ALT (3° APCH PATH)	4000	3520	3200	2880	2560	2250	1930	1700	1290	970	650	330	



CATEGORY	A	B	C	D
S-I ILS SA CAT II #		RA 101 DA 116 (100) 350/400 RVR §		
S-I ILS SA CAT I #		RA 152 DA 166 (150) 450 RVR		

NOTES

- ‡1. ACFT MAY BE RADAR VECTORED TO FNA.
- ‡2. SIMULTANEOUS APCH AUTHORISED WITH RWY 16R. SEE PRM USER INSTRUCTIONS FOR ADDN RQMNTS.
- ‡3. SPECIAL AIRCREW & ACFT CERTIFICATION REQUIRED.
- ‡4. CAT A, B, C 350 RVR CAT D 400RVR.

Changes: ABN DCMSD, Editorial.

SSYII22-179

CAUTION: CLOSELY SPACED PARALLEL RUNWAYS [^]