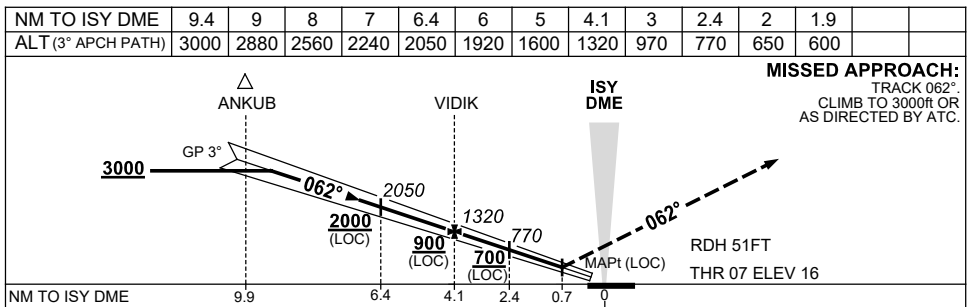
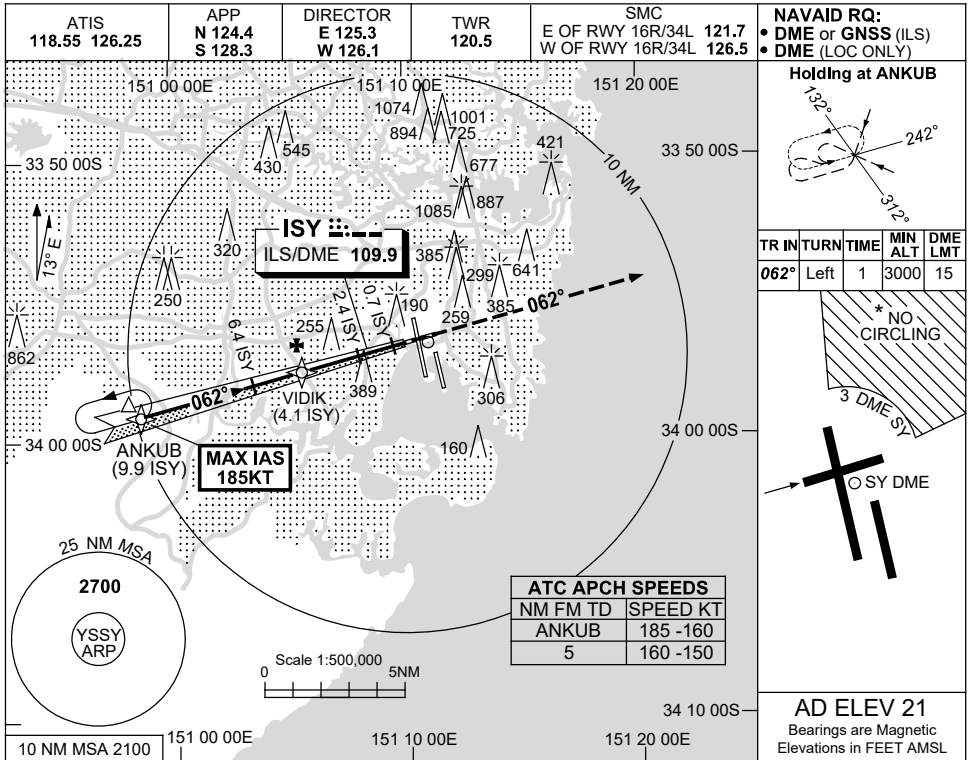


USE QNH

ILS or LOC RWY 07

13 JUN 2024

SYDNEY/KINGSFORD SMITH, NSW (YSSY)



NOTES

1. MAX IAS:
ANKUB : 185KT.
- * 2. NO CIRCLING
BEYOND 3 DME SY
EAST OF RWY 16R &
NORTH OF RWY 25.
- ‡ 3. SPECIAL ALTN MNM
700/2.5KM.
(NOT APPLICABLE
TO LOC/DME).

CATEGORY	A	B	C	D
S-I ILS		220 (204-1.5)	1500 RVR	
S-I LOC		600 (579-3.3)		
CIRCLING*	710 (689-2.4)		1000 (979-4.0)	1000 (979-5.0)
ALTERNATE*‡	(1189-4.4)		(1479-6.0)	(1479-7.0)

Changes: ABN DCMSD, Editorial.

SSYII07-179