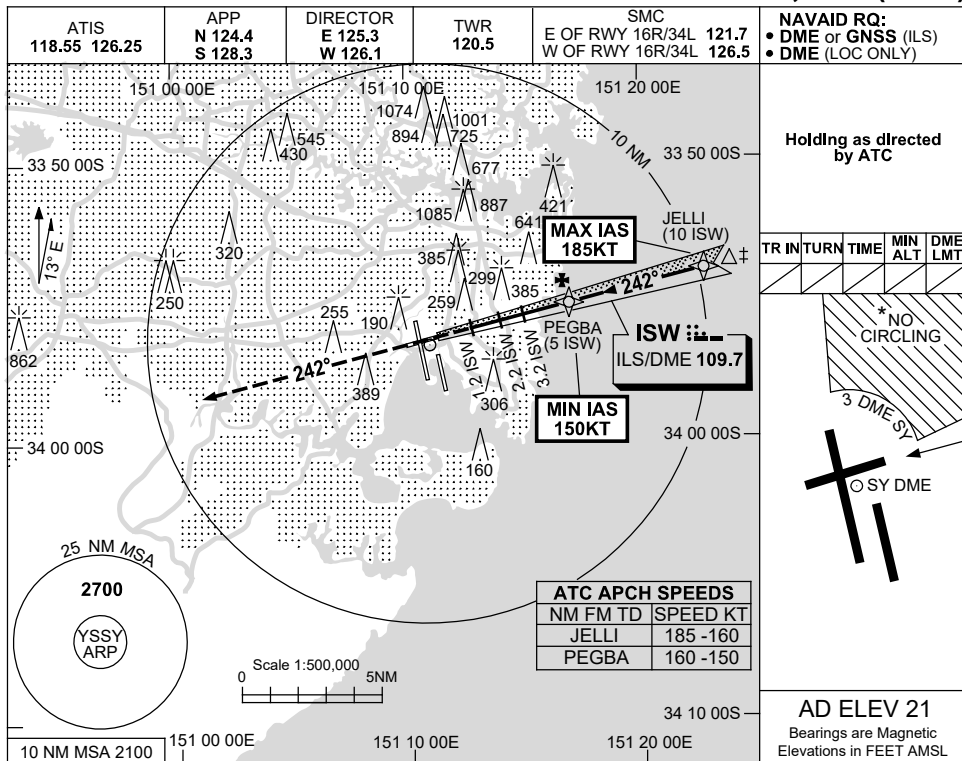


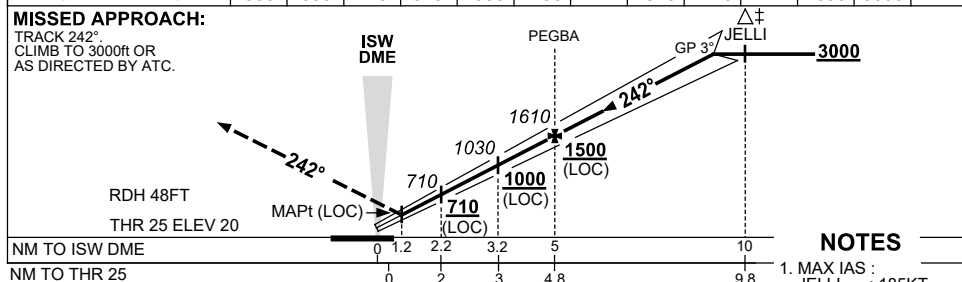
USE QNH SYDNEY/KINGSFORD SMITH, NSW (YSSY)

ILS or LOC RWY 25

13 JUN 2024



| | | | | | | | | | | | | | |
|--------------------|-----|-----|-----|-----|------|------|------|------|------|------|------|------|--|
| NM TO ISW DME | 1.8 | 2 | 2.2 | 3 | 3.2 | 4 | 5 | 6 | 7 | 8 | 9 | 9.4 | |
| ALT (3° APCH PATH) | 580 | 650 | 710 | 970 | 1030 | 1290 | 1610 | 1920 | 2240 | 2580 | 2880 | 3000 | |



NOTES

1. MAX IAS : JELLI : 185KT.
2. ACFT MAY BE RADAR VECTORED TO FNA.
3. NO CIRCLING BEYOND 3 DME SY EAST OF RWY 16R & NORTH OF RWY 25.
4. SPECIAL ALTN MNM 700/2.5KM. (NOT APPLICABLE TO LOC/DME).

| CATEGORY | A | B | C | D |
|------------|---------------|---------------|----------------|----------------|
| S-I ILS | | 230 (210-1.5) | 1500 RVR | |
| S-I LOC | | 580 (559-3.2) | | |
| CIRCLING* | 710 (689-2.4) | | 1000 (979-4.0) | 1000 (979-5.0) |
| ALTERNATE* | (1189-4.4) | | (1479-6.0) | (1479-7.0) |

Changes: ABN DCMSD, Editorial.

SSYI06-179