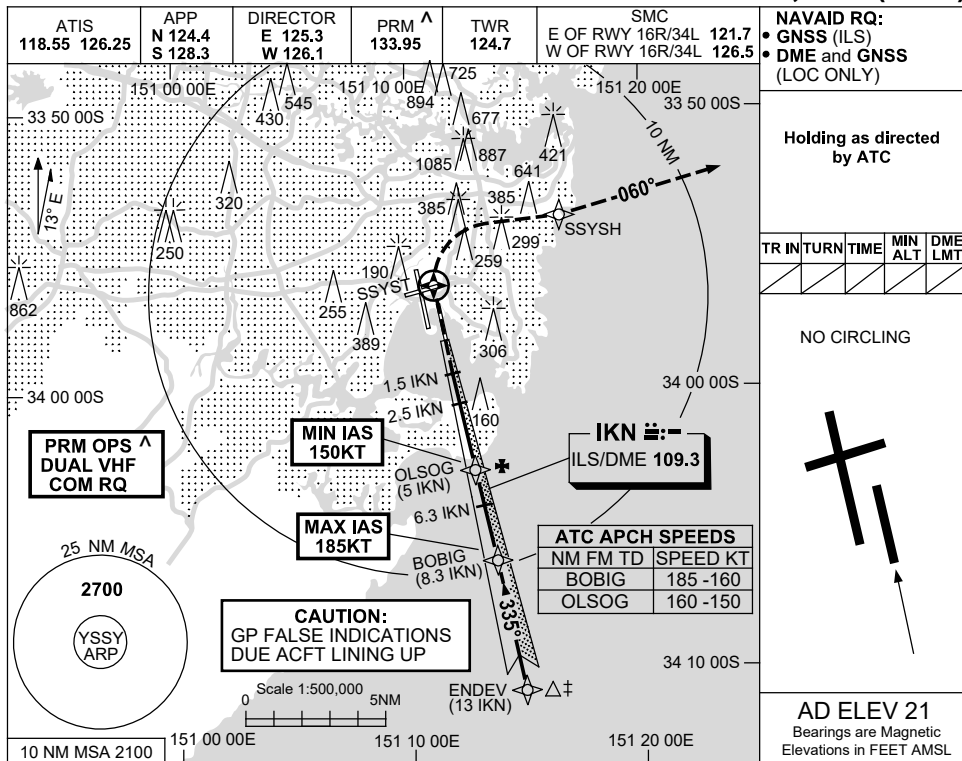
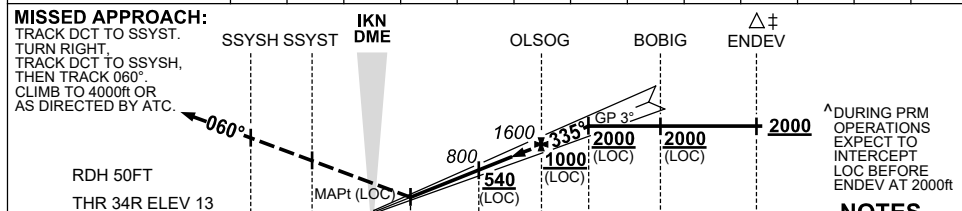


13 JUN 2024

**SYDNEY/KINGSFORD SMITH, NSW (YSSY)**



NM TO IKN DME	1.5	2	2.5	3	4	5	6	6.3				
ALT (3° APCH PATH)	500	650	800	960	1280	1600	1920	2000				



NM TO IKN DME	1.8	0	1.5	2.5	5	6.3	8.3	13
NM TO THR 34R	2	0	1.3	2.3	4.8	6.1	8.1	12.8

<sup>^</sup> DURING PRM OPERATIONS EXPECT TO INTERCEPT LOC BEFORE ENDEV AT 2000ft

- NOTES**
- MAX IAS:  
BOBIG : 185KT,  
MAP UNTIL  
SSSYH : 185KT.
  - ACFT MAY BE RADAR VECTORED TO FNA.
  - SIMULTANEOUS APCH AUTHORIZED WITH RWY 34L. SEE PRM USER INSTRUCTIONS FOR ADDN RQMTS.
  - SPECIAL ALTN MNM 700/2.5KM (NOT APPLICABLE TO LOC/DME).

CATEGORY	A	B	C	D
S-I ILS (3.6% MAP)		220 (207-1.2)	1000 RVR	
S-I ILS (2.5% MAP)		460 (447-2.2)		
S-I LOC		500 (487-2.4)		
CIRCLING	NOT AUTHORISED			
ALTERNATE *	(1189-4.4)		(1479-6.0) (1479-7.0)	

Changes: ABN DCMSD, Editorial.

SSYI05-179

**CAUTION: CLOSELY SPACED PARALLEL RUNWAYS <sup>^</sup>**