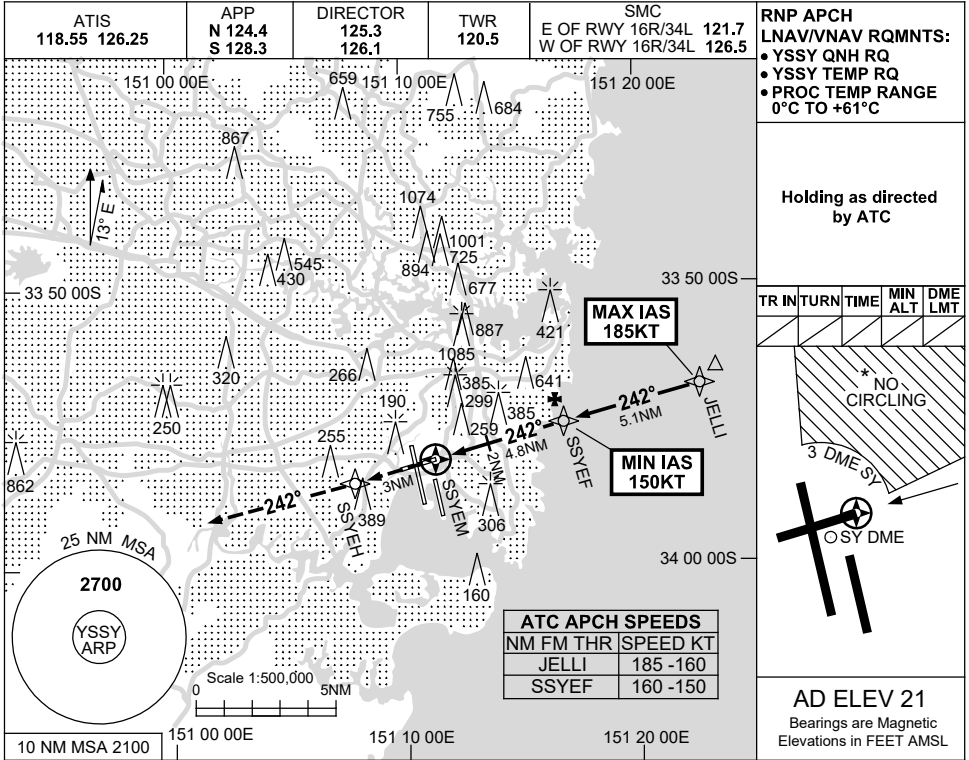


USE QNH

RNP RWY 25

30 NOV 2023

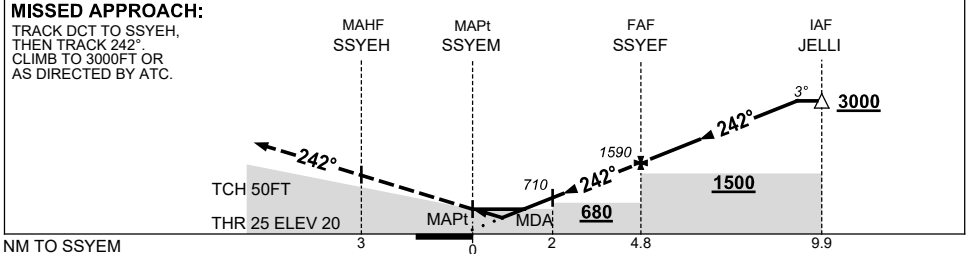
SYDNEY/KINGSFORD SMITH, NSW (YSSY)



TR	INT	TURN	TIME	MIN ALT	DME LMT
* NO CIRCLING					
3 DME SY					

AD ELEV 21  
Bearings are Magnetic  
Elevations in FEET AMSL

NM TO NEXT WPT	SSYEM	0.9	1.4	2	3	4	SSYEF	1	2	3	4	4.4	
ALT (3° APCH PATH)		360	520	710	1030	1340	1590	1910	2230	2550	2860	3000	



**NOTES**

CATEGORY	A	B	C	D
LNAV/VNAV		360 (340-1.9)		
LNAV		520 (499-2.8)		
CIRCLING *	710 (689-2.4)	1000 (979-4.0)	1000 (979-5.0)	
ALTERNATE	(1189-4.4)	(1479-6.0)	(1479-7.0)	

1. MAX IAS: JELLI : 185KT.  
\* 2. NO CIRCLING BEYOND 3 DME SY EAST OF RWY 16R & NORTH OF RWY 25.

Changes: Editorial. SSYGN06-177