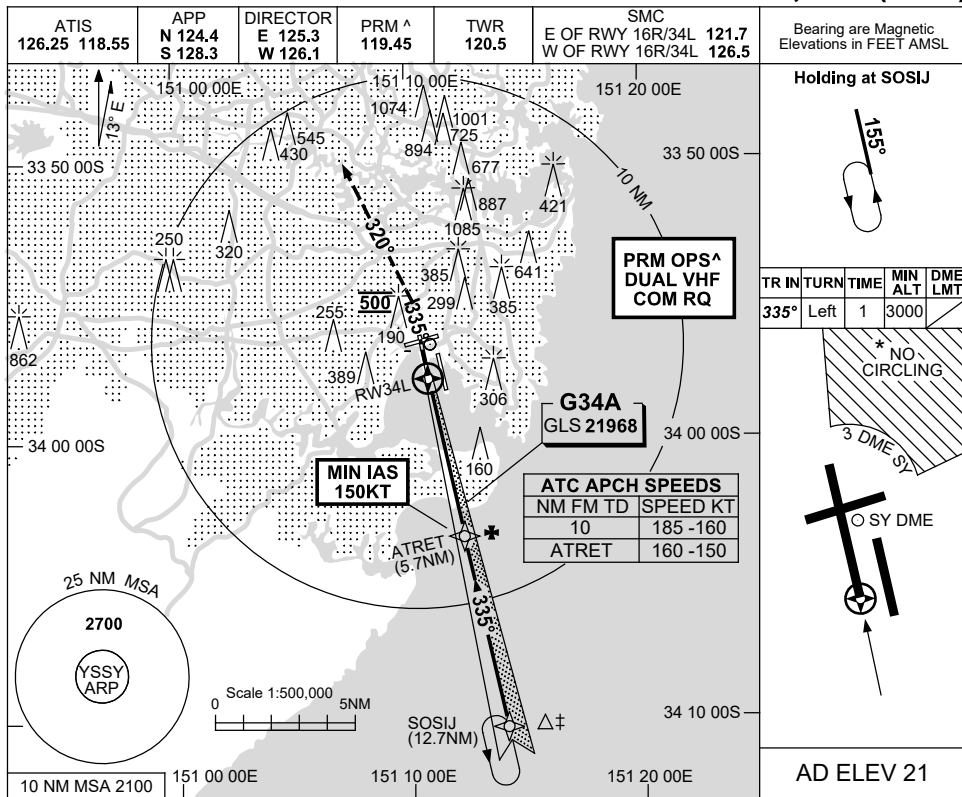
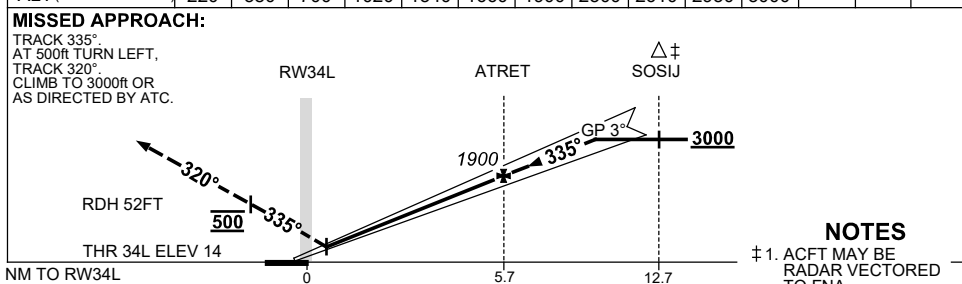


**USE QNH** GLS RWY 34L  
**SYDNEY/KINGSFORD SMITH, NSW (YSSY)**

**13 JUN 2024**



RW34L DIST	0.5	1	2	3	4	5	5.7	7	8	9	9.2		
ALT (3° APCH PATH)	220	380	700	1020	1340	1660	1900	2300	2610	2930	3000		



- NOTES**
- ‡ 1. ACFT MAY BE RADAR VECTORED TO FNA.
  - ‡ 2. SIMULTANEOUS APCH AUTHORISED WITH RWY 34R. SEE PRM USER INSTRUCTIONS FOR ADDN RQMNTS.
  - \* 3. NO CIRCLING BEYOND 3 DME SY EAST OF RWY 16R & NORTH OF RWY 25.

CATEGORY	A	B	C	D
S-I GLS	220 (206) 0.8		800 RVR	
CIRCLING *	710 (689-2.4)		1000 (979-4.0)	1000 (979-5.0)
ALTERNATE	(1189-4.4)		(1479-6.0)	(1479-7.0)

Changes: ABN DCMSD, Editorial. SSYGL05-179

**CAUTION: CLOSELY SPACED PARALLEL RUNWAYS ^**