

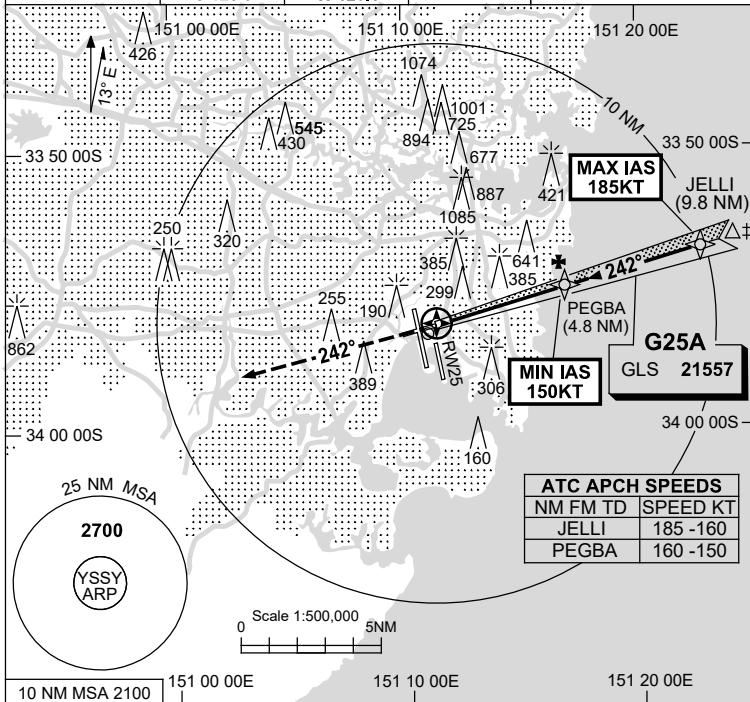
# USE QNH SYDNEY/KINGSFORD SMITH, NSW (YSSY)

GLS RWY 25

28 NOV 2024

ATIS 126.25 118.55	APP N 124.4 S 128.3	DIRECTOR E 125.3 W 126.1	TWR 120.5	SMC E OF RWY 16R/34L 121.7 W OF RWY 16R/34L 126.5
-----------------------	---------------------------	--------------------------------	--------------	---

Bearing are Magnetic  
Elevations in FEET AMSL



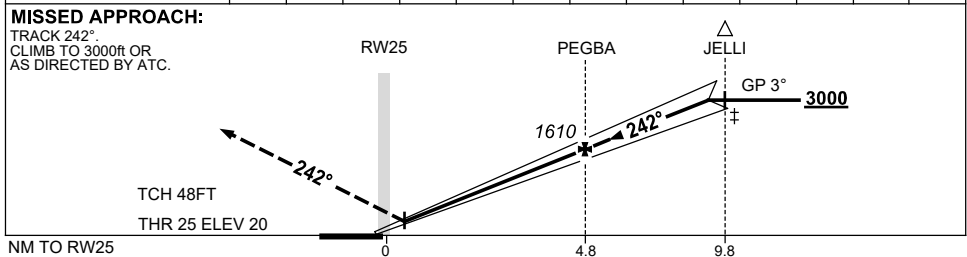
**Holding as advised by ATC**

TR	IN	TURN	TIME	MIN ALT	DME LMT
* NO CIRCLING					
3 DME SY					
OSY DME					

**AD ELEV 21**

ATC APCH SPEEDS	
NM FM TD	SPEED KT
JELLI	185 -160
PEGBA	160 -150

RW25 DIST	0.5	1	2	3	4	4.8	6	7	8	9	9.2		
ALT (3° APCH PATH)	230	390	700	1020	1340	1610	1980	2300	2620	2930	3000		



**NOTES**

1. MAX IAS :  
JELLI : 185KT.
- \* 2. NO CIRCLING BEYOND 3 DME SY EAST OF RWY 16R & NORTH OF RWY 25.
- ‡ 3. ACFT MAY BE RADAR VECTORED TO FNA.

CATEGORY	A	B	C	D
S-I GLS	<b>230 (210-1.5) 1500 RVR</b>			
CIRCLING *	<b>710 (689-2.4)</b>		<b>1000 (979-4.0)</b>	<b>1000 (979-5.0)</b>
ALTERNATE	(1189-4.4)		(1479-6.0)	(1479-7.0)

Changes: TCH.

SSYGL04-181