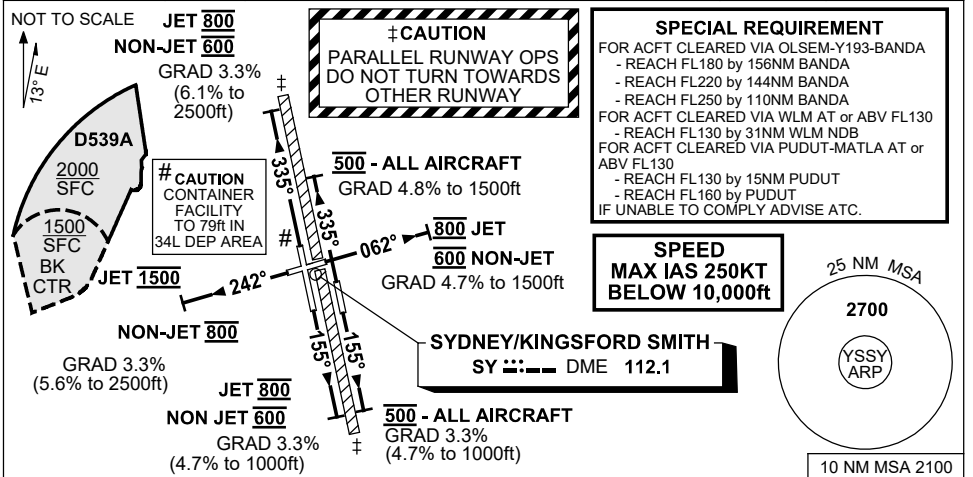


**STANDARD INSTRUMENT DEPARTURES (SID)  
SYDNEY THREE DEPARTURE (RADAR)  
SYDNEY/KINGSFORD SMITH, NSW (YSSY)**

**30 NOV 2023**

ATIS <b>118.55 126.25</b>	ACD <b>133.8</b>	SMC E OF RWY 16R/34L <b>121.7</b> W OF RWY 16R/34L <b>126.5</b>	TWR RWYS 16R/34L,07/25 <b>120.5</b> RWYS 16L/34R <b>124.7</b>	DEP(N) N&E <b>123.0</b>	DEP(S) S,W&NW <b>129.7</b>
------------------------------	---------------------	---	---	----------------------------	-------------------------------



**SYDNEY THREE DEPARTURE (RADAR)**

**RWY 07**

- GRAD 4.7% to 1500ft, then 3.3%
- Track 062°
- AT 600ft (800ft **Jet ACFT**) turn to assigned heading or track
- Expect radar vectors
- ACFT cleared via OLSEM, WLM or MATLA see SPECIAL REQUIREMENT above

**RWY 16R**

- GRAD 3.3% (4.7% to 1000ft)
- Track 155°
- AT 600ft (800ft **Jet ACFT**) turn to assigned heading or track
- Expect radar vectors
- ACFT cleared via OLSEM, WLM or MATLA see SPECIAL REQUIREMENT above

**RWY 16L**

- GRAD 3.3% (4.7% to 1000ft)
- Track 155°
- AT 500ft turn to assigned heading or track
- Expect radar vectors
- ACFT cleared via OLSEM, WLM or MATLA see SPECIAL REQUIREMENT above

**RWY 25**

- GRAD 3.3% (5.6% to 2500ft)
- Track 242°
- AT 800ft (NOT BEFORE 1500ft **Jet ACFT**) turn to assigned heading or track
- Expect radar vectors
- ACFT cleared via OLSEM, WLM or MATLA see SPECIAL REQUIREMENT above

**RWY 34R**

- GRAD 4.8% to 1500ft, then 3.3%
- Track 335°
- AT 500ft turn to assigned heading or track
- Expect radar vectors
- ACFT cleared via OLSEM, WLM or MATLA see SPECIAL REQUIREMENT above

**RWY 34L #**

- GRAD 3.3% (6.1% to 2500ft)
- Track 335°
- AT 600ft (800ft **Jet ACFT**) turn to assigned heading or track (NO RIGHT TURN BLW 1500ft)
- Expect radar vectors
- ACFT cleared via OLSEM, WLM or MATLA see SPECIAL REQUIREMENT above

**COMMUNICATIONS FAILURE PROCEDURE**

- On recognition of communication failure.
  - Squawk 7600
  - Maintain last assigned vector for two minutes and, if necessary, climb to minimum safe altitude to maintain terrain clearance, then
  - Proceed in accordance with the latest ATC route clearance acknowledged.

Changes: SPECIAL RQMNTS, NEW LOGO, Editorial.

SSYDP12-177