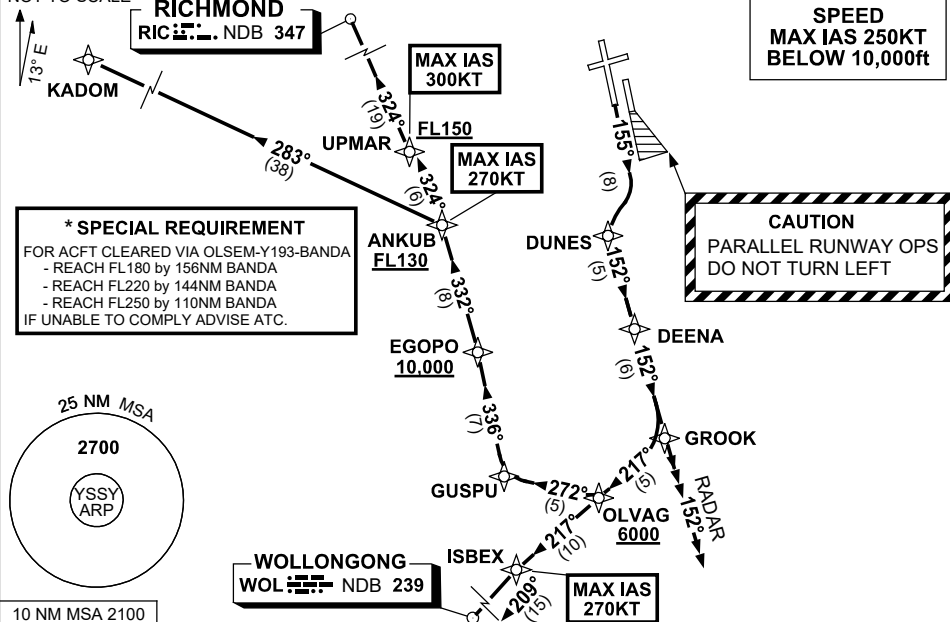


**STANDARD INSTRUMENT DEPARTURES (SID)
RWY 16R GROOK ONE (RNAV)
SYDNEY/KINGSFORD SMITH, NSW (YSSY)**

5 SEP 2024

ATIS 118.55 126.25	ACD 133.8	SMC E OF RWY 16R/34L 121.7 W OF RWY 16R/34L 126.5	TWR 120.5	DEP(N) N&E 123.0	DEP(S) S,W&NW 129.7	APP(CURFEW HR) 128.3
-----------------------	--------------	---	--------------	---------------------	------------------------	-------------------------

NOT TO SCALE



DEPARTURE: GROOK ONE

CAUTION: Parallel runway operations - DO NOT TURN LEFT

- GRAD 3.3%
- Track 155°

RWY 16R

- As soon as practicable turn RIGHT, track DCT to DUNES
- Turn LEFT track 152° to DEENA
- Track 152° to GROOK

TRANSITIONS:

RADAR • From GROOK continue tracking 152°
• Expect radar vectors to cleared route
• For ACFT cleared via OLSEM
* See SPECIAL REQUIREMENT above

KADOM MAX IAS 270KT until ANKUB
• From GROOK turn RIGHT track 217° to OLVAG
Cross OLVAG AT or ABV 6000ft
• Turn RIGHT, track 272° to GUSPU
• Turn RIGHT, track 336° to EGPOPO
Cross EGPOPO AT or ABV 10,000ft
• Turn LEFT, track 332° to ANKUB
Cross ANKUB AT or ABV FL130 (RQ GRAD TO ANKUB: 5.4%)
• Turn LEFT, track 283° to KADOM then as cleared.

RIC MAX IAS 270KT until ANKUB
• From GROOK turn RIGHT track 217° to OLVAG
Cross OLVAG AT or ABV 6000ft
• Turn RIGHT, track 272° to GUSPU
• Turn RIGHT, track 336° to EGPOPO
Cross EGPOPO AT or ABV 10,000ft
• Turn LEFT, track 332° to ANKUB
Cross ANKUB AT or ABV FL130 (RQ GRAD TO ANKUB: 5.4%)
MAX IAS 300KT until UPMAR
• Turn LEFT, track 324° to UPMAR
Cross UPMAR AT or ABV FL150
• Track 324° to RIC, then as cleared.

WOL MAX IAS 270KT until ISBEX
• From GROOK turn RIGHT track 217° to OLVAG
Cross OLVAG AT or ABV 6000ft
• Track 217° to ISBEX
• Turn LEFT, track 209° to WOL, then as cleared.

Changes: NEW PROCEDURE.

SSYDP10-180