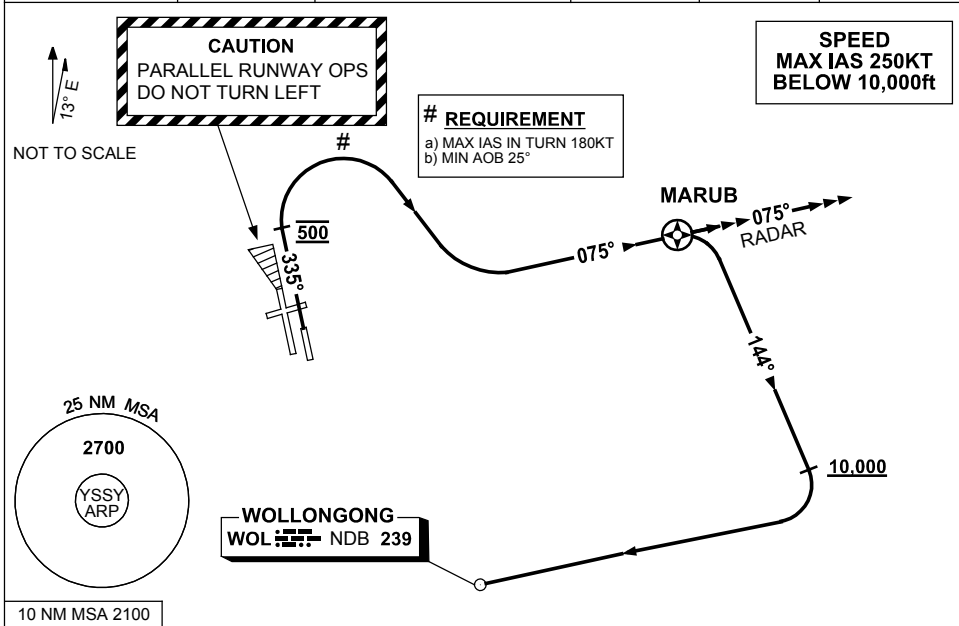


**STANDARD INSTRUMENT DEPARTURES (SID)  
RWY 34R MARUB SEVEN (JET) (RNAV)  
SYDNEY/KINGSFORD SMITH, NSW (YSSY)**

**30 NOV 2023**

|                       |              |   |              |                     |                        |
|-----------------------|--------------|---|--------------|---------------------|------------------------|
| ATIS<br>118.55 126.25 | ACD<br>133.8 | SMC<br>E OF RWY 16R/34L 121.7<br>W OF RWY 16R/34L 126.5 | TWR<br>124.7 | DEP(N) N&E<br>123.0 | DEP(S) S,W&NW<br>129.7 |
|-----------------------|--------------|---|--------------|---------------------|------------------------|



10 NM MSA 2100

**DEPARTURE: MARUB SEVEN**

**CAUTION:** Parallel runway operations - DO NOT TURN LEFT

**RWY 34R**

- GRAD 4.8% to 1500ft, then 3.3%
- Track 335°
- AT 500ft turn RIGHT#, intercept and track 075° to MARUB
- Then follow transition instructions

**TRANSITIONS:**

**RADAR:**

- At MARUB continue tracking 075°
- Expect radar vectors to cleared route

**WOLLONGONG:  
(WOL)**

- At MARUB turn RIGHT track 144°
- AT or ABV 10,000ft turn RIGHT, track DCT to WOL NDB, then as cleared