

**STANDARD INSTRUMENT DEPARTURES (SID)
RWY 34R OLSEM ONE (JET) (RNAV)
SYDNEY/KINGSFORD SMITH, NSW (YSSY)**

30 NOV 2023

ATIS 118.55 126.25	ACD 133.8	SMC E OF RWY 16R/34L 121.7 W OF RWY 16R/34L 126.5	TWR 124.7	DEP(N) 123.0
-----------------------	--------------	---	--------------	-----------------

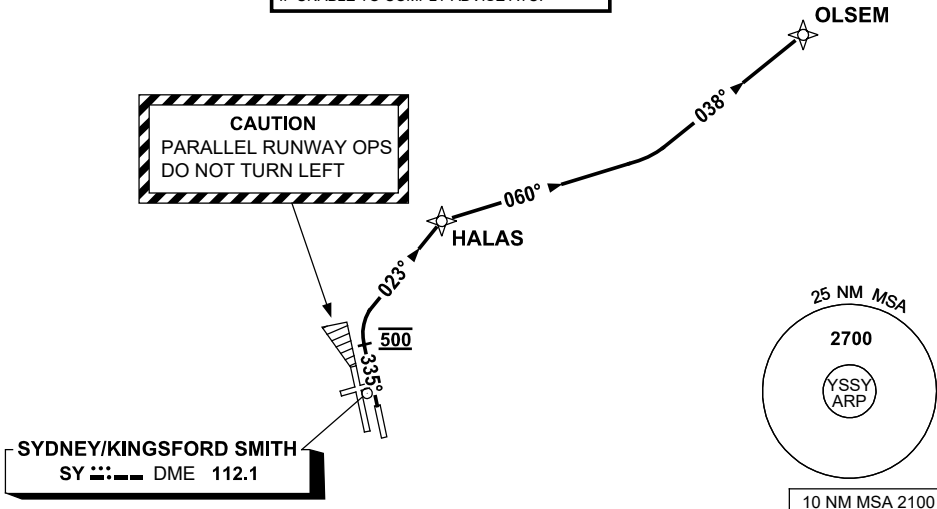
NOT TO SCALE



SPECIAL REQUIREMENT
FOR ACFT CLEARED VIA OLSEM-Y193-BANDA
- REACH FL 180 by 156NM BANDA
- REACH FL 220 by 144NM BANDA
- REACH FL 250 by 110NM BANDA
IF UNABLE TO COMPLY ADVISE ATC.

**SPEED
MAX IAS 250KT
BELOW 10,000ft**

**CAUTION
PARALLEL RUNWAY OPS
DO NOT TURN LEFT**



**SYDNEY/KINGSFORD SMITH
SY DME 112.1**

10 NM MSA 2100

OLSEM ONE DEPARTURE

CAUTION: Parallel runway operations - DO NOT TURN LEFT

RWY 34R

- GRAD 4.8% to 1500ft then 3.3%
- Track 335°
- AT 500ft turn RIGHT intercept and track 023° to HALAS
- At HALAS turn RIGHT, track 060° to intercept and track 038° to OLSEM, then as cleared
- See SPECIAL REQUIREMENT above

Changes: REVISED PROC, CHART TITLE, Editorial.

SSYDP07-177