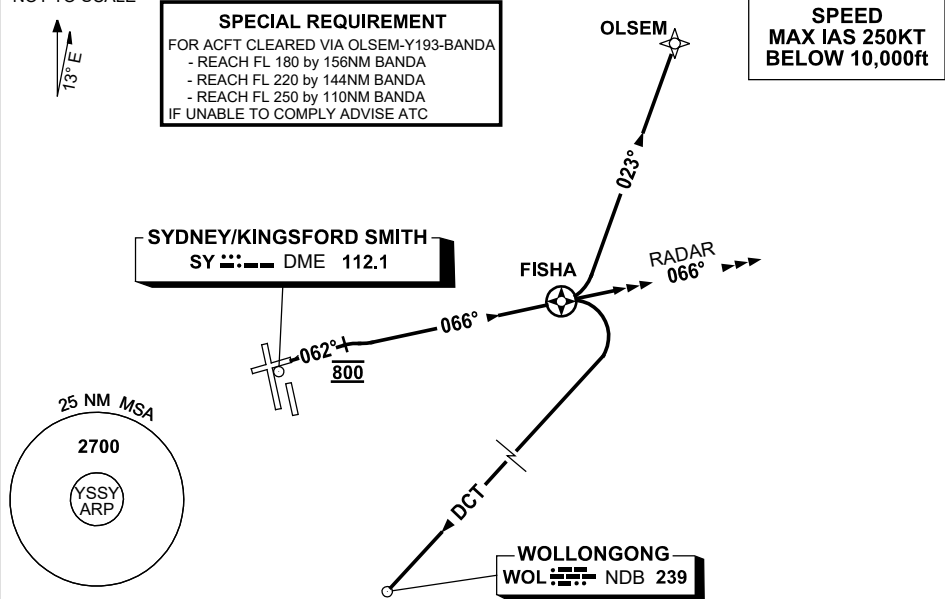


**STANDARD INSTRUMENT DEPARTURES (SID)
RWY 07 FISHA NINE (JET) (RNAV)
SYDNEY/KINGSFORD SMITH, NSW (YSSY)**

30 NOV 2023

| | | | | | |
|-----------------------|--------------|---|--------------|---------------------|------------------------|
| ATIS 118.55 126.25 | ACD 133.8 | SMC E OF RWY 16R/34L 121.7 W OF RWY 16R/34L 126.5 | TWR 120.5 | DEP(N) N&E 123.0 | DEP(S) S,W&NW 129.7 |
|-----------------------|--------------|---|--------------|---------------------|------------------------|

NOT TO SCALE



DEPARTURE: FISHA NINE

RWY 07

- GRAD 4.7% to 1500ft, then 3.3%
- Track 062°, at 800ft turn RIGHT intercept and track 066° to FISHA then follow transition instructions

TRANSITIONS:

RADAR

- At FISHA CONTINUE tracking 066°
- Expect radar vectors to cleared route

WOLLONGONG (WOL)

- At FISHA turn RIGHT
- Track DCT to WOL NDB, then as cleared

OLSEM

- At FISHA turn LEFT
- Track DCT to OLSEM (approx 023°), then as cleared
- See SPECIAL REQUIREMENT above