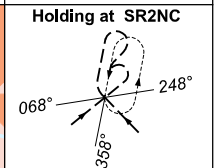
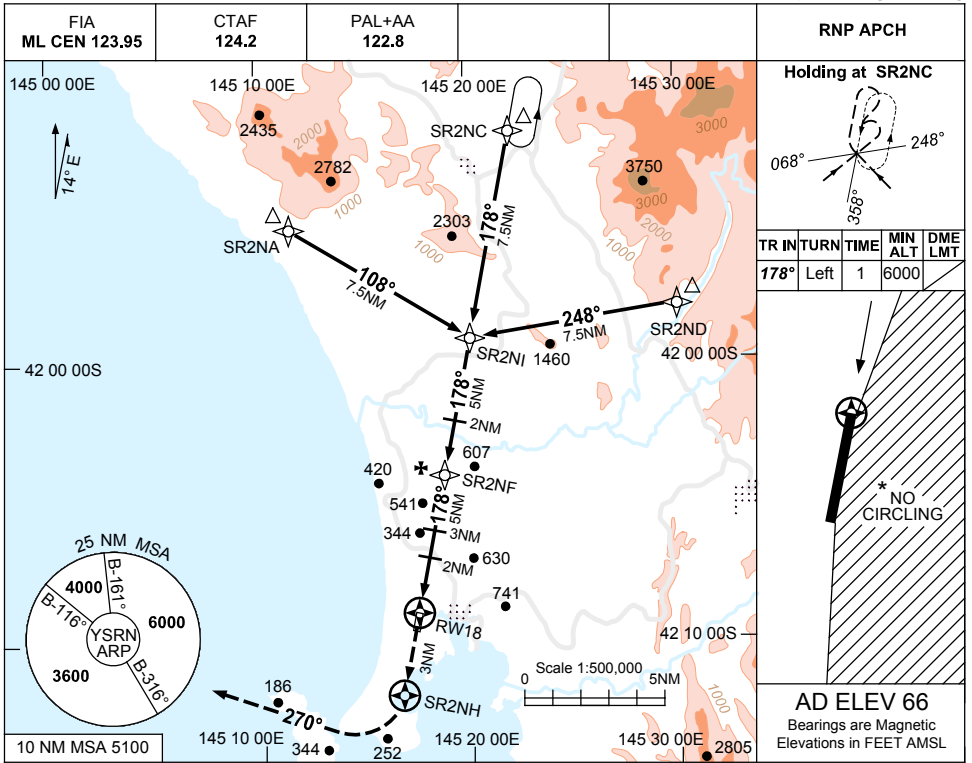


USE QNH

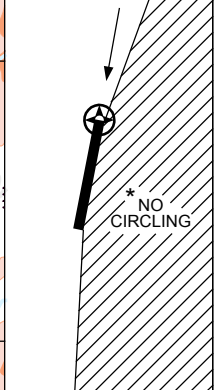
RNP RWY 18

7 SEP 2023

STRAHAN, TAS (YSRN)

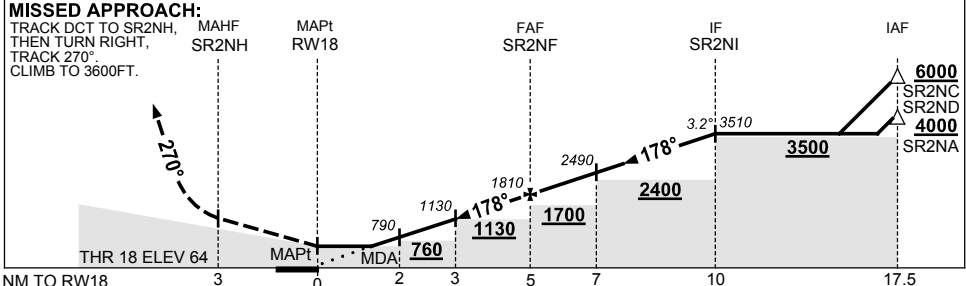


TR	IN	TURN	TIME	MIN	DME
178°	Left	1		6000	LMT



AD ELEV 66
 Bearings are Magnetic
 Elevations in FEET AMSL

NM TO NEXT WPT	RW18	1.6	2	3	4	SR2NF	1	2	3	4	SR2NI		
ALT (3.2° APCH PATH)		660	790	1130	1470	1810	2150	2490	2830	3170	3510		



NOTES

CATEGORY	A	B	C	D
LNAV	660 (594-3.2)			NOT APPLICABLE
CIRCLING *	840 (774-2.4)		1140 (1074-4.0)	
ALTERNATE	(1274-4.4)		(1574-6.0)	

- MAX IAS: INITIAL : 230KT.
- NO CIRCLING EAST OF RWY 18/36.
- AWIS (PHONE) 03 6283 8607
- COLOUR: SEE SPEC NOTICES.

Changes: THR ELEV.

SRNGN01-176