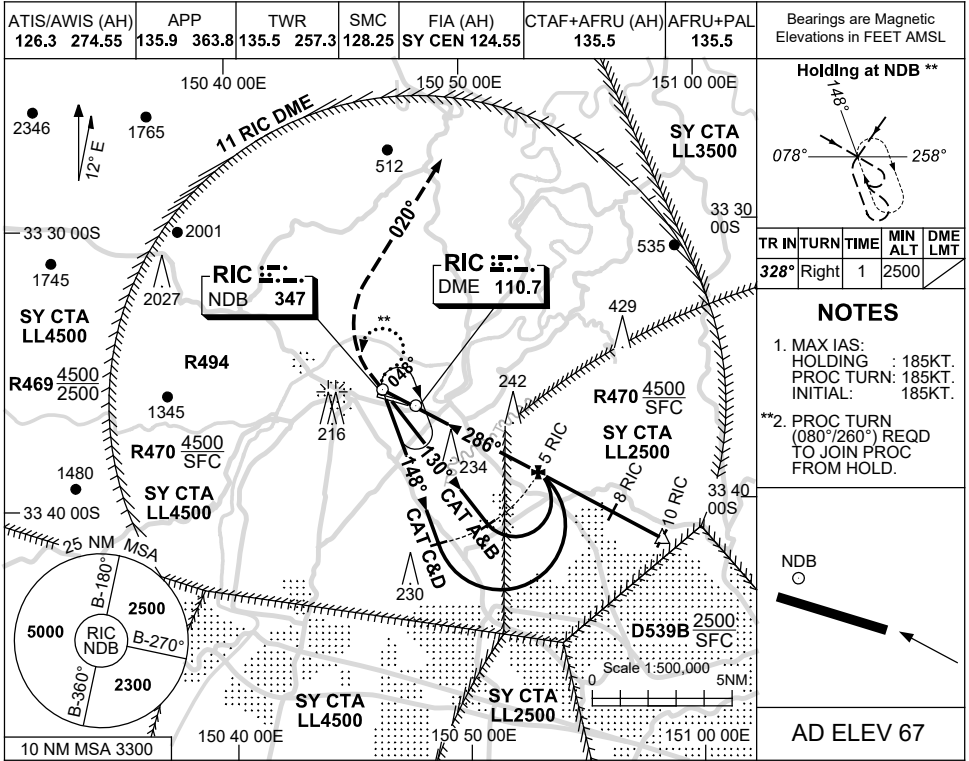


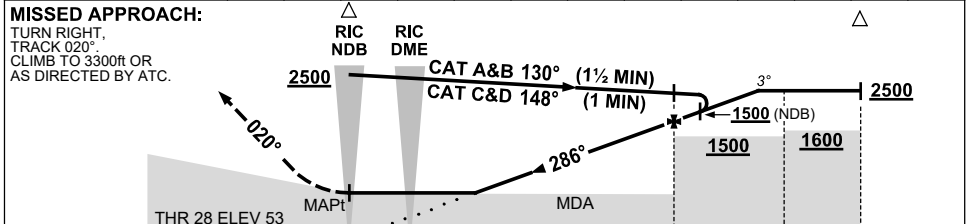
USE QNH

NDB-B or NDB RWY 28
RICHMOND, NSW (YSRI)

13 JUN 2024



DIST BY DME	1.6	2	3	4	4.1	5	6	7	7.3				
ALT (3° APCH PATH)	680	820	1140	1460	1500	1780	2100	2420	2500				



NM BY DME 1.3 0 5 8 10

NOTES

CATEGORY	A	B	C	D
S-I NDB/DME	750 (697-4.0)			
NDB	CIRCLING ONLY			
CIRCLING	800 (733-2.4)	1090 (1023-4.0)		1160 (1093-5.0)
ALTERNATE	(1233-4.4)		(1523-6.0) (1593-7.0)	

3. BRG FLUCTUATIONS UP TO 7° ON 148° OUTBOUND LEG BTN 4 AND 5NM.
4. IF MISSED APCH CONDUCTED PRIOR TO NDB CLIMB NOT ABV 2500ft UNTIL NDB.

Changes: AFRU+PAL, Editorial.

SRINB01-179