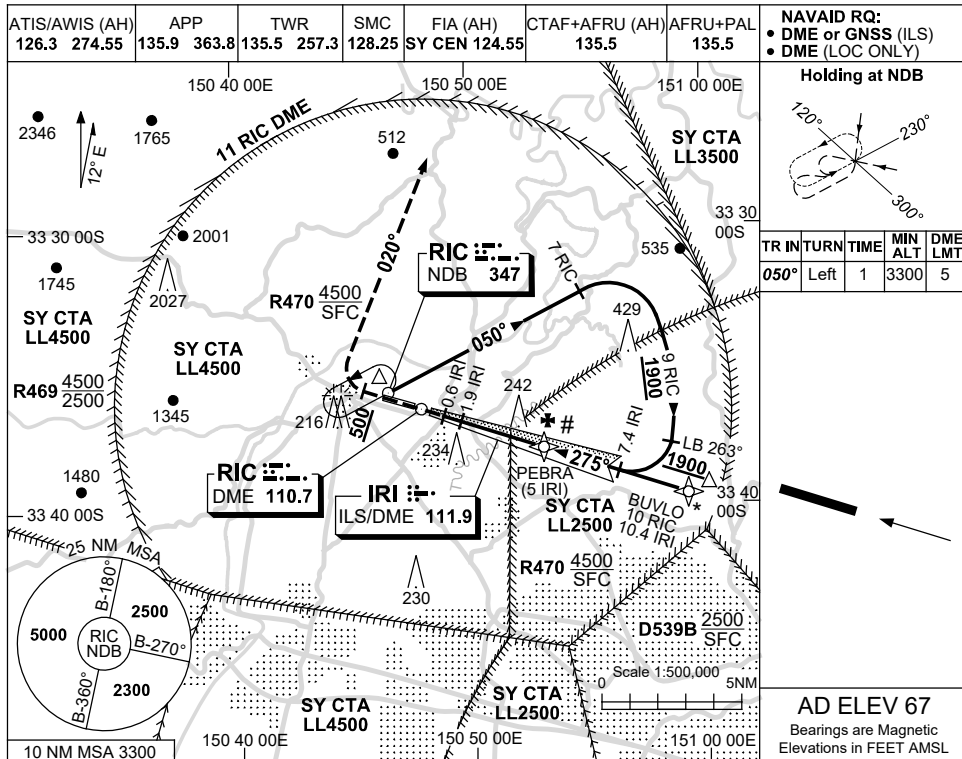


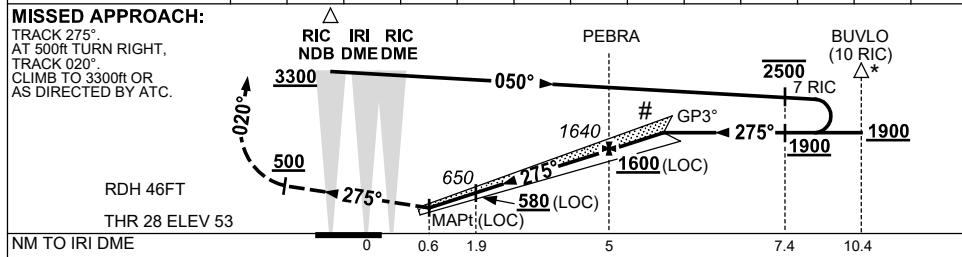
USE QNH

ILS-Z or LOC-Z RWY 28
RICHMOND, NSW (YSRI)

13 JUN 2024



NM TO IRI DME	1.6	1.9	2	3	4	5	5.8					
ALT (3° APCH PATH)	550	650	680	1000	1320	1640	1900					



NOTES

- * 1. ACFT MAY BE RADAR VECTORED TO IAF.
- # 2. IF MISSED APCH CONDUCTED PRIOR TO 0.6 IRI, CLIMB NOT ABV 2500FT UNTIL 0.6 IRI.
- 3. USE OF GP RESTR TO WI 7° OF RWY CL.

CATEGORY	A	B	C	D
S-I ILS		360 (307) 0.8		
S-I LOC		550 (497-1.9)		
CIRCLING	800 (733-2.4)		1090 (1023-4.0)	1160 (1093-5.0)
ALTERNATE	(1233-4.4)		(1523-6.0)	(1593-7.0)

Changes: AFRU+PAL, Editorial.

SR1101-179